



# Athletic field project update

January 28<sup>th</sup>, 2013

CULVER CITY UNIFIED SCHOOL DISTRICT

**Balfour Beatty**  
Construction



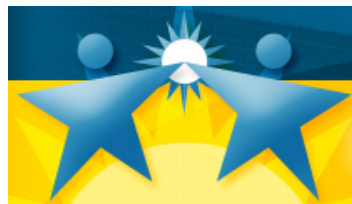
**CULVER CITY UNIFIED SCHOOL DISTRICT**

# Project History

- **Site committee and various stakeholders procure athletic fields needs assessment.**
- **Design team generates athletic field master plan through various stakeholder meetings and prior district input.**
- **Master plan is created with the capacity of various budgets (approx 8.5M) at the time.**
- **Project design phase begins**
- **Project design submittal to DSA, DSA review and approval process.**
- **RFQ for CM services issued and submitted July 20<sup>th</sup>, 2012.**
- **Shortlist interviews (Sept – Oct 2012).**
- **October 2012 Balfour Beatty Construction joins CCUSD team.**
- **Preconstruction begins.**
- **Balfour Beatty begins planning process and delivers first detailed cost estimate November 2012 and begins discussions regarding project goals and priorities.**
- **Numerous Site and District meetings held between (Nov – Jan 2013) to further obtain site feedback, discuss project goals, priorities, and plans to begin procurement process for project. Attendees included former AD, Current AD, School Principal, coach, district staff, architect and construction manager.**
- **Board Workshop scheduled for Monday January 28<sup>th</sup>, 2013.**

# Current Status

- **Additional district & site committee meetings completed.**
  - Agreement on plan accomplished to maximize available budget
  - Careful and strategic considerations made based on master plan scope
- **Detailed planning & construction estimate revised based on district & site committee sessions.**
- **Meetings with key vendors, manufacturers, and key trades in progress.**
- **Initial field tour(s) of similar projects completed.**
- **Additional coordination and planning sessions with A/E have taken place.**
- **Initial coordination, planning and additional discussions with solar contractor are completed.**
- **Elevator Plans completed and submitted to DSA.**
- **Elevator BBC estimates completed and delivered to district.**
- **Needs assessment for Auditorium project in process.**
- **Review of prior site committee needs assessment in process**



# Next steps

- **A/E team makes final revisions to drawings and project specifications based on planning sessions. Provides initial bid package drawings.**
- **BBC begins solicitation process and obtains bids for initial bid package for demolition, grading and utility scopes.**
- **NTP to begin with initial bid package.**
- **Pre-Construction meeting held with stake-holders & community.**
- **Ground Breaking Ceremony.**
- **Construction begins (on or before March 2013).**
- **A/E team completes scope revisions and provides final bid sets for balance of project scope.**
- **Construction continues.**



# Phase 1 of Master Plan

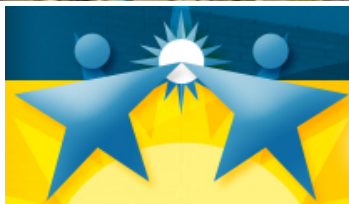


❖ Synthetic Football field and Track

❖ Home team building, restrooms, ticket booth and concessions

❖ Site utility infrastructure, & site lighting upgrades

❖ Bleacher system options



# Project Budget

- ✓ 4.85 M – Phase 1 of Athletic field Master Plan  
(based on available district budget)
- ✓ 3.65 M – Phase 2 Balance of Athletic field Master Plan  
(additional funding required to complete master plan)
- ✓ 8.5 M – Total Project Budget

four Beatty  
struction



CULVER CITY UNIFIED SCHOOL DISTRICT

# Critical Time line

**Balfour Beatty**  
Construction

**Construction begins on or before March 2013**

**Construction ends on or before September 2013**



**CULVER CITY UNIFIED SCHOOL DISTRICT**

# Moving Forward

- **Phase 1 completion and preparation for expansion into completion of Master Plan.**
- **Update historical facilities needs assessment and organize information into database.**
- **Work with district while on-site with initial project phase to further develop needs assessment**

# Needs Assessment & facilities status

## Review Criteria

### Permanent Facilities

- Exterior/Base Building
  - ADA/Code Issues
  - Deferred Scope
  - Paint/Plaster
  - Roofing
  - Gutters/Fascias/Eaves
  - Doors/Windows
- Interiors
  - Finishes/Flooring
  - Ceiling/Lighting
  - Casework
- Building Systems
  - Mech/Plumb/Electrical
- Restrooms
  - ADA/Code Issues
  - Fixtures/Finishes

### Relocatables

- Exterior/Base Building
  - ADA/Code Issues
  - Deferred Scope
  - Paint/Plaster
  - Roofing
  - Gutters/Fascias/Eaves
  - Doors/Windows
- Interiors
  - Finishes/Flooring
  - Ceiling/Lighting
  - Casework
- Building Systems
  - Mech/Plumb/Electrical
- Leased Status

### Site Conditions

- Project Site
  - ADA/Code Issues
  - Paving
  - Drainage
  - Parking
  - Fencing
  - Lighting
  - Arcades

# Questions & closing remarks

