

**ROBERT FROST FEASIBILITY STUDY
PHASE 02**

Needs Assessment

- Air Quality & Energy Efficiency
- Stage Production Systems
- Production Support Spaces
- Audience Amenities
- Accessibility & Circulation
- Arrival & Experience
- Maintenance & Management

Needs Assessment



HVAC



**Stage
Production**

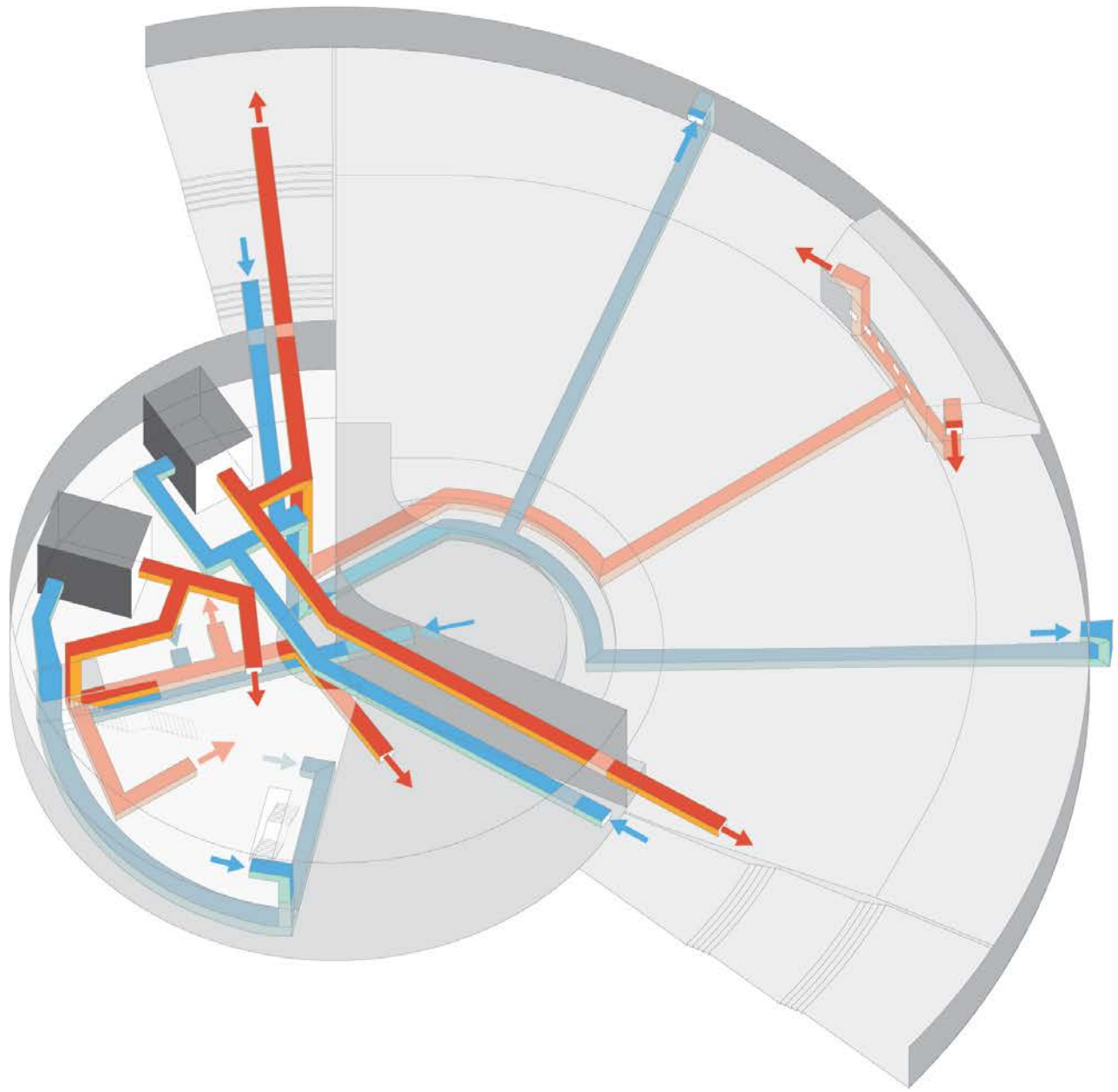


**Backstage
Support**

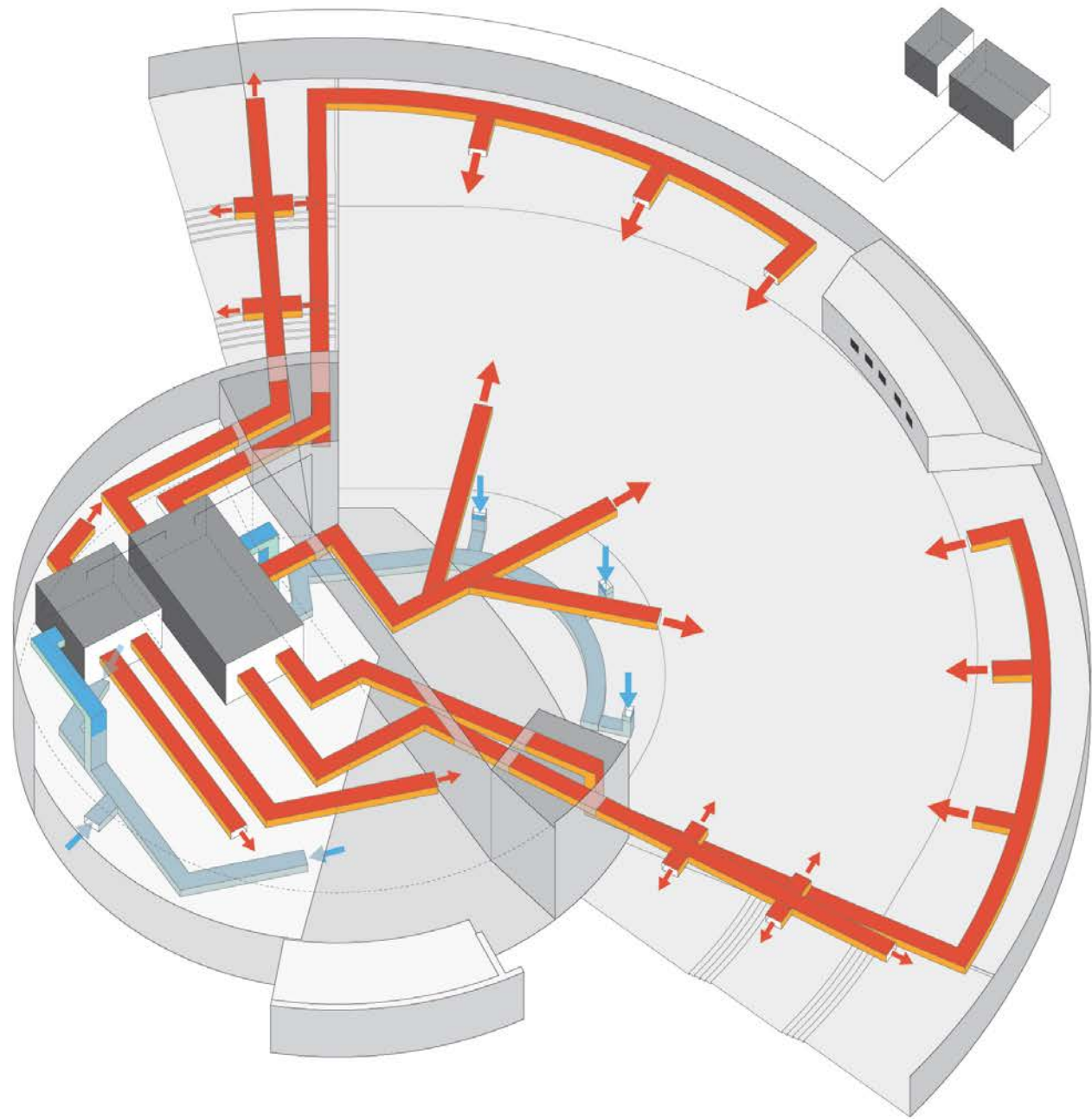
PRIORITY ONE

Heating Ventilation and Air Conditioning

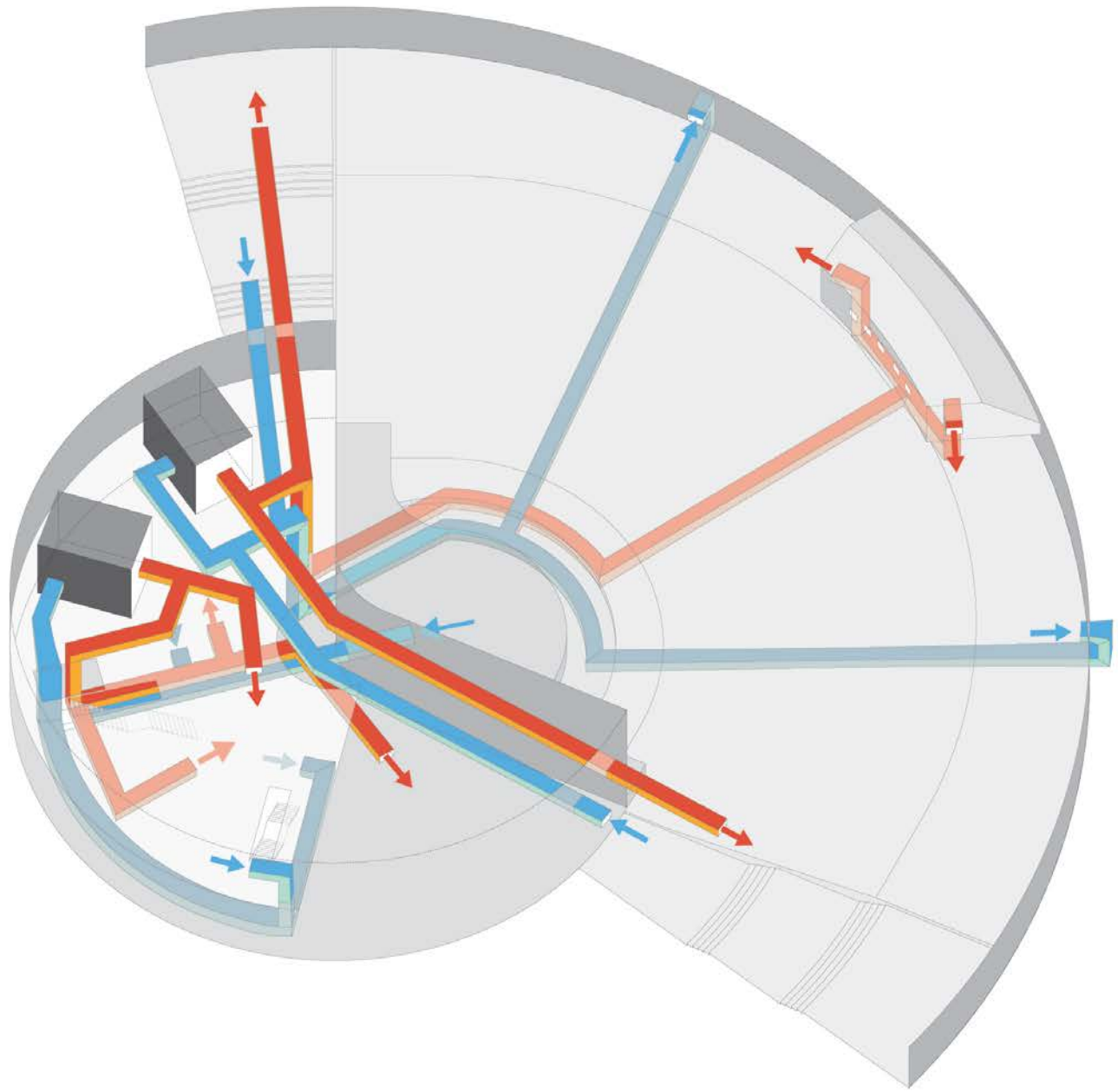
- Air Quality
- Efficiency
- Comfort
- Outdated Equipment & Controls
- Usable Floor Space and/or Head Room



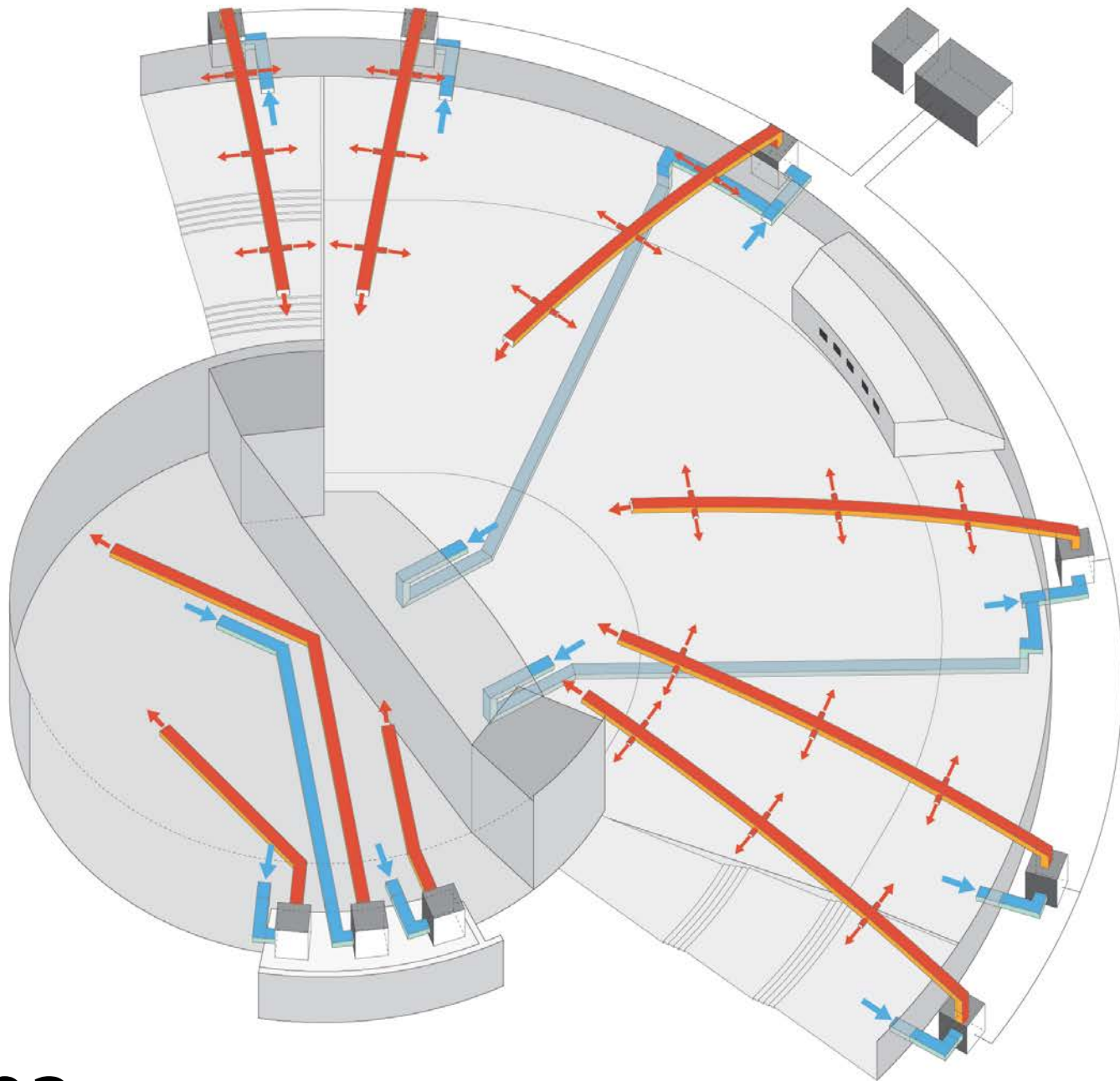
Existing



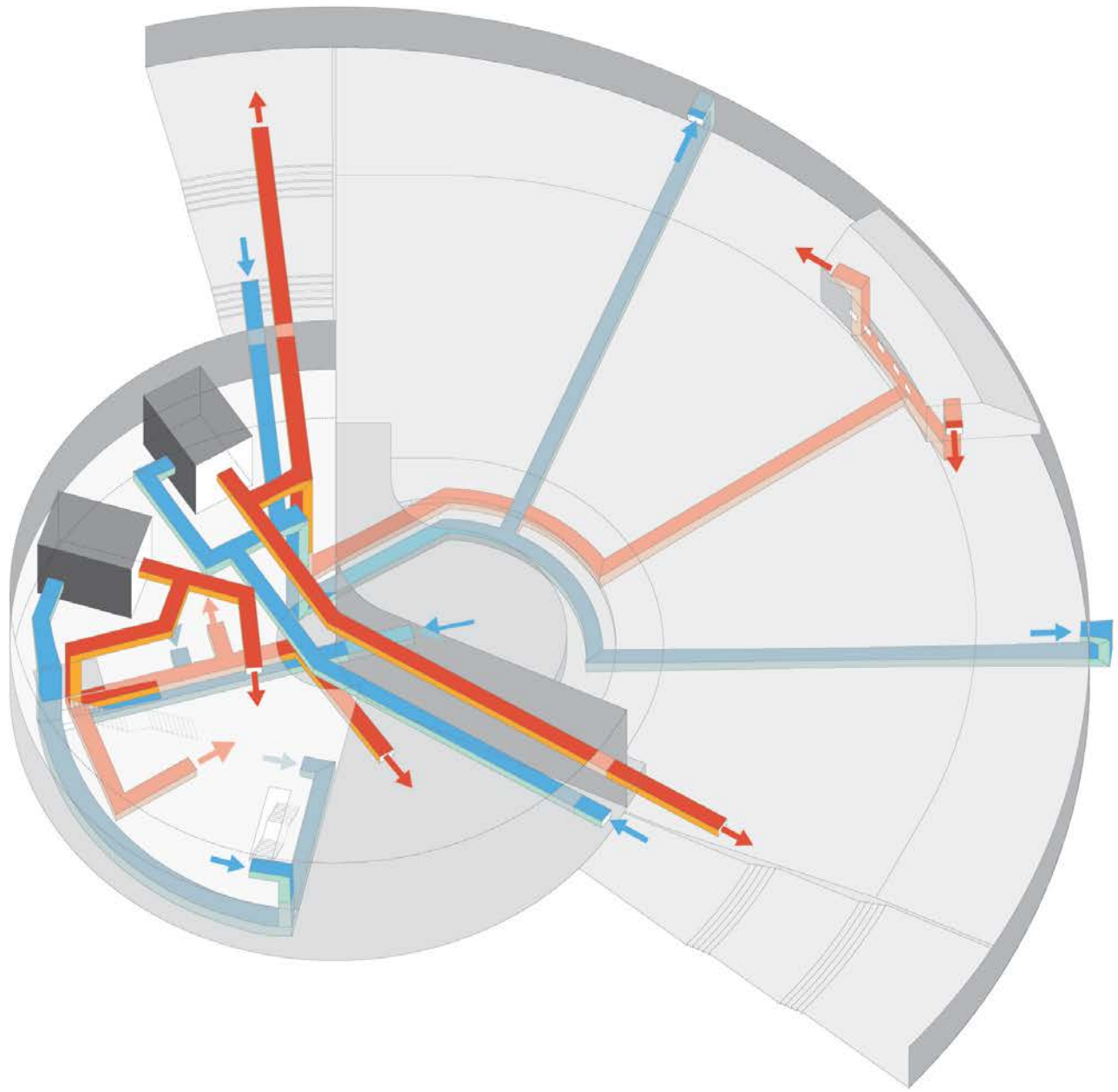
Option 01



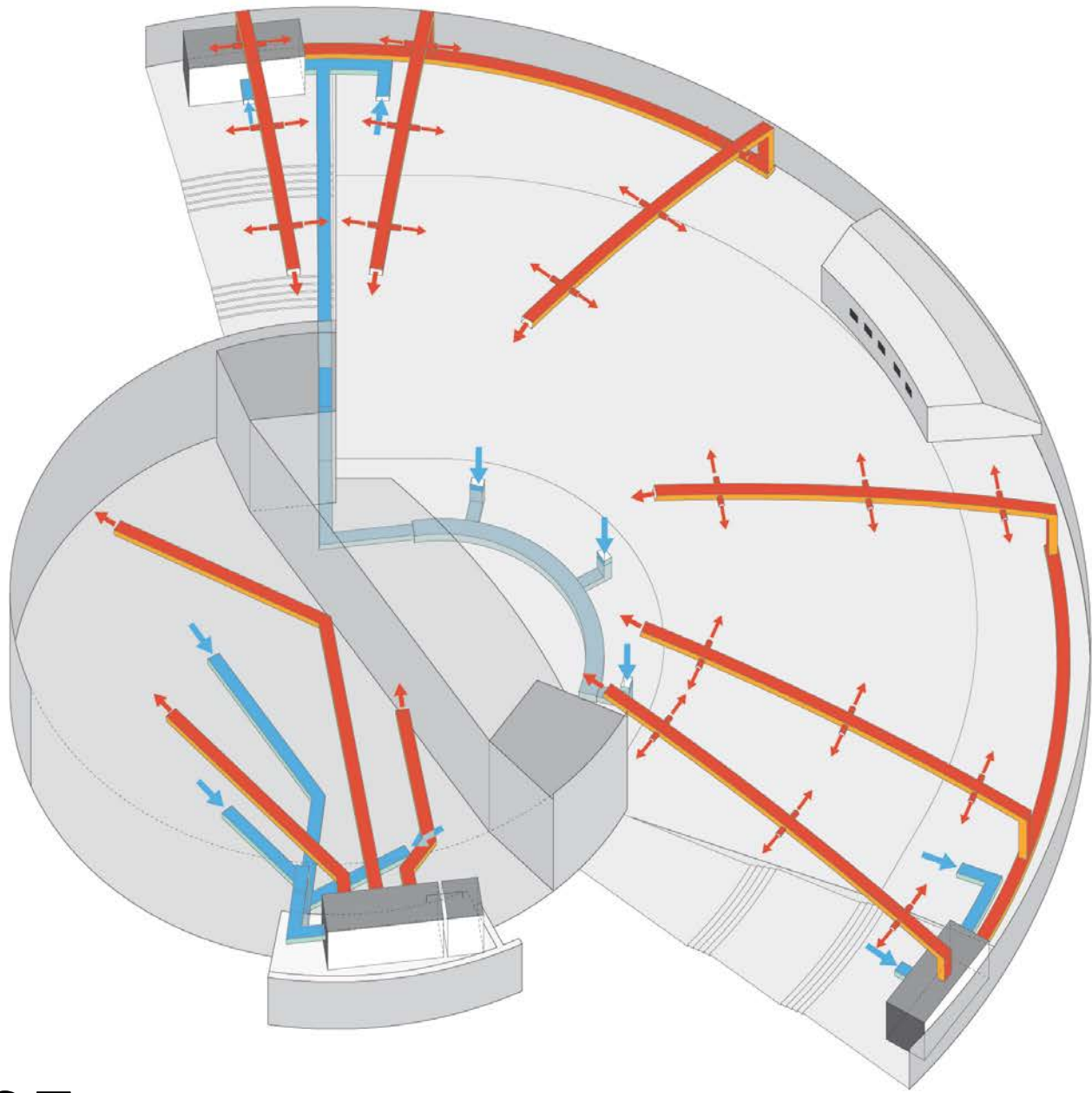
Existing



Option 02



Existing

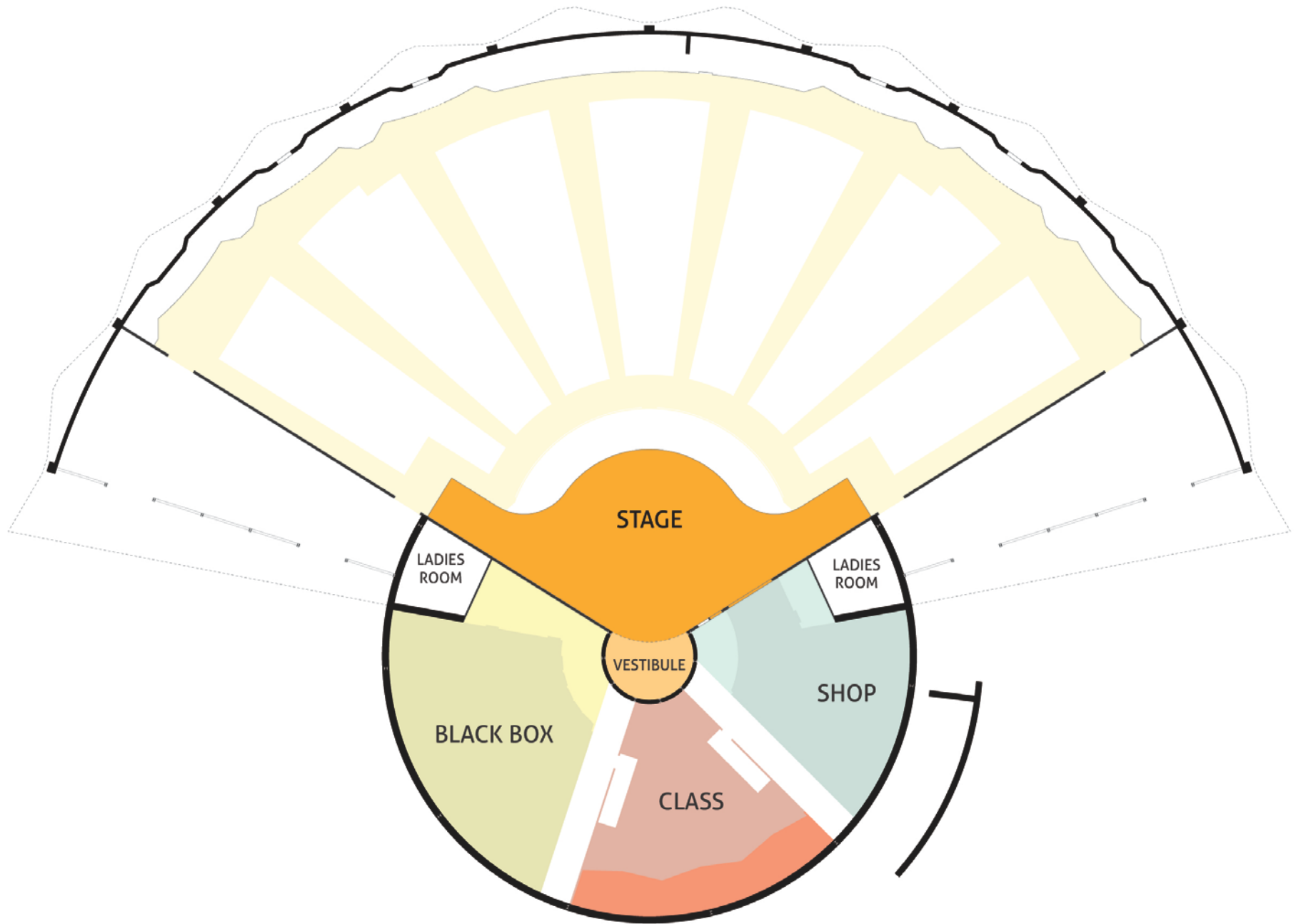


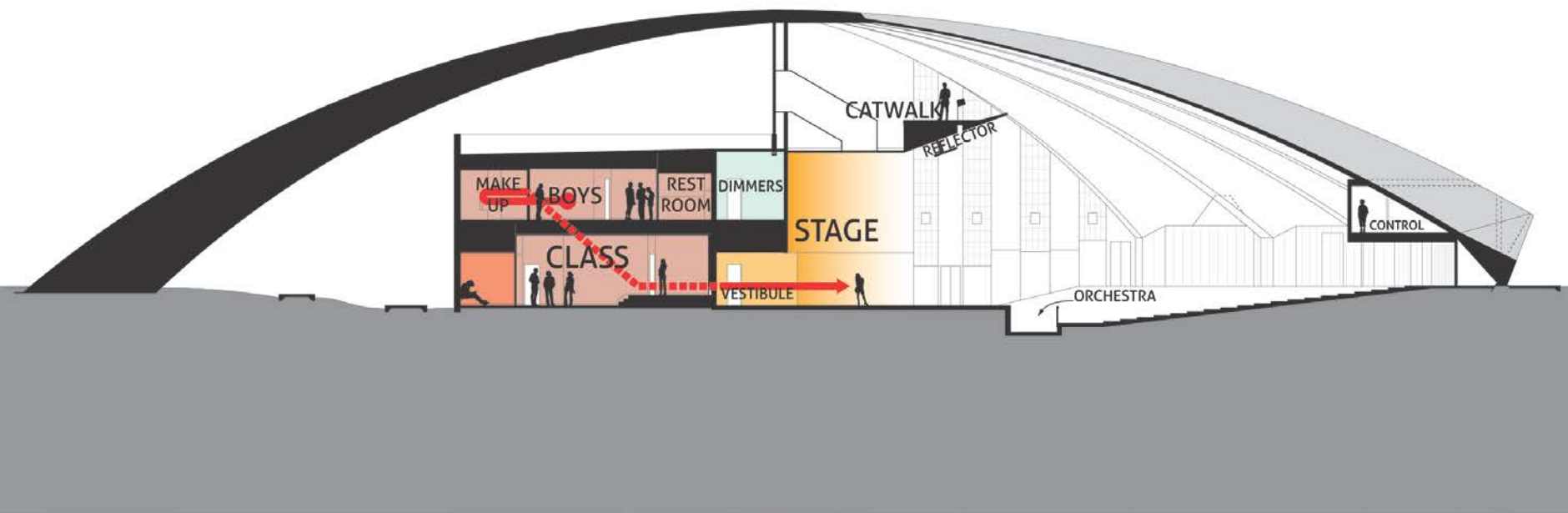
Option 03

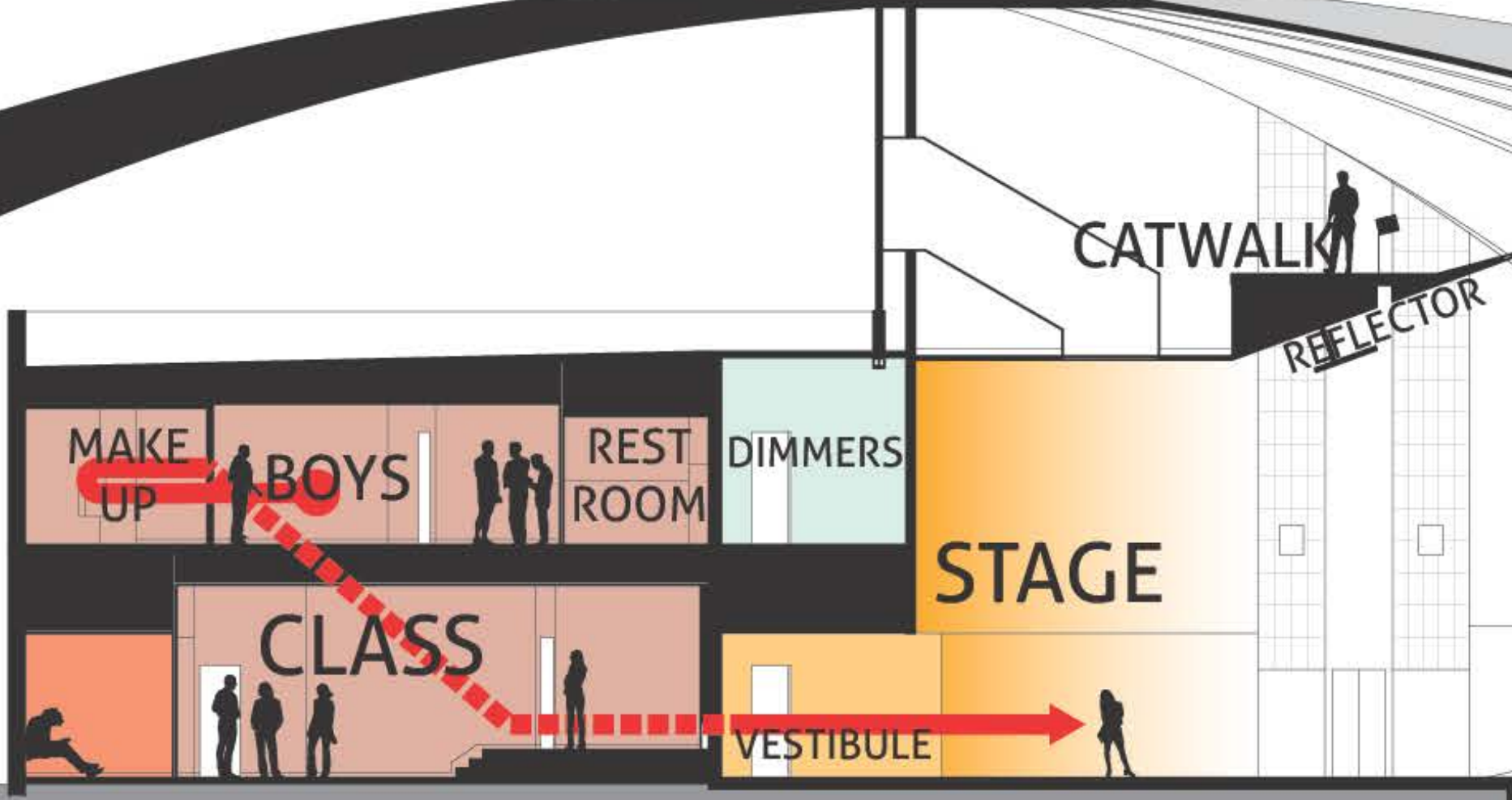
PRIORITY TWO

Stage Production Structure

- Performance
- Lighting Positions
- Acoustics
- Stage Access & Wing space
- Rigging & Fly System







MAKE UP

BOYS

REST ROOM

DIMMERS

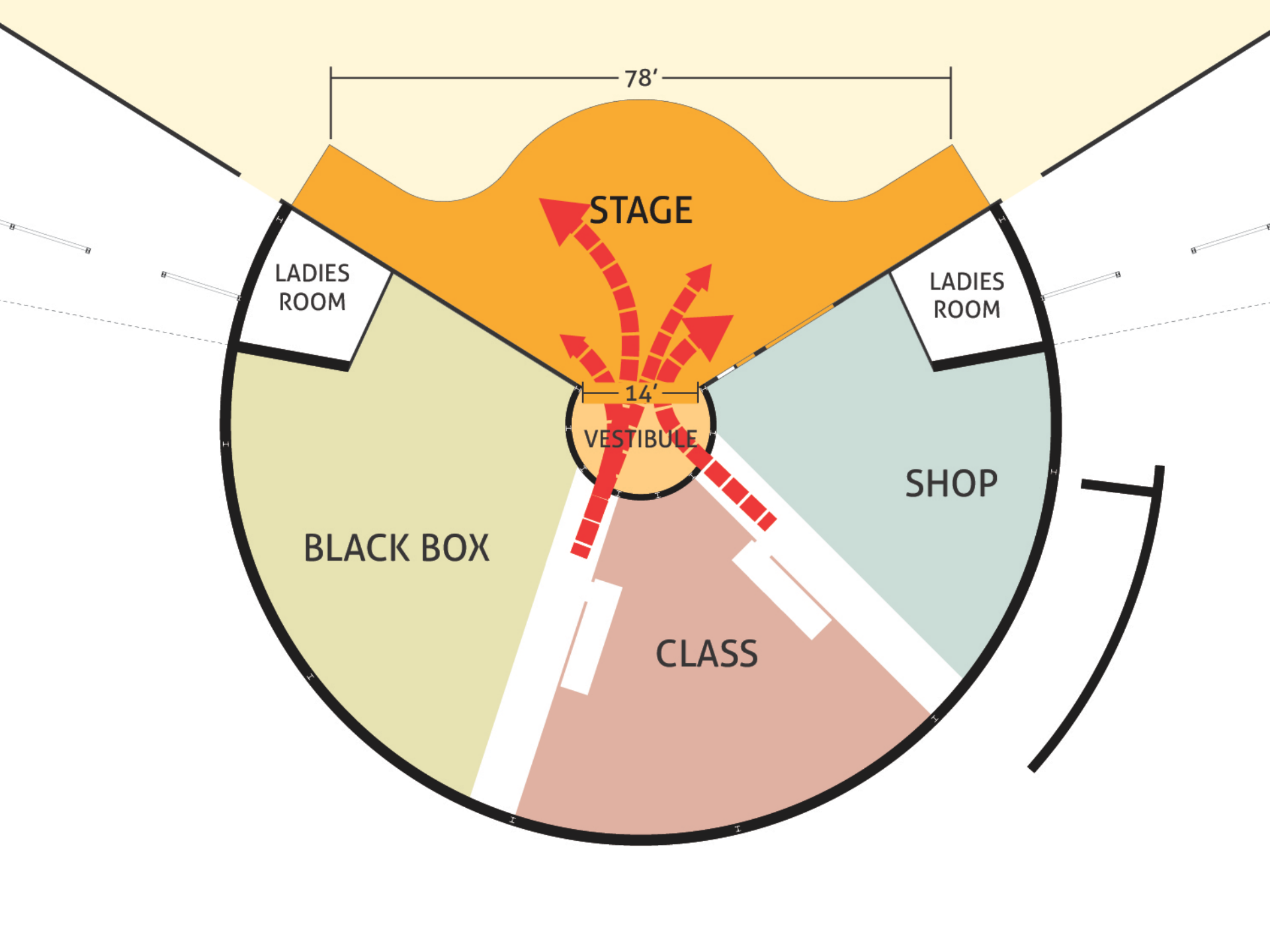
CATWALK

REFLECTOR

STAGE

CLASS

VESTIBULE



78'

STAGE

LADIES ROOM

LADIES ROOM

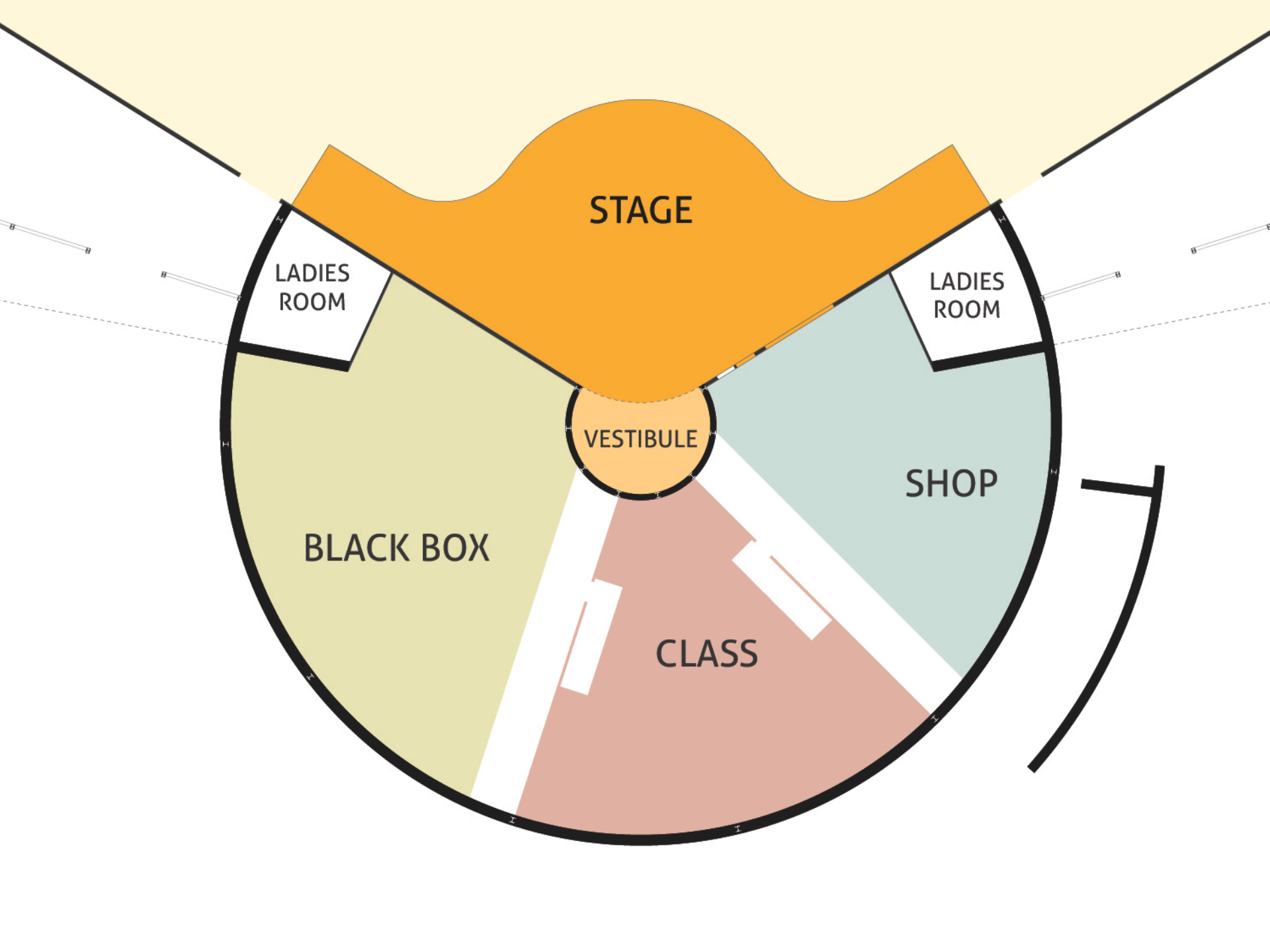
14'

VESTIBULE

BLACK BOX

SHOP

CLASS



STAGE

LADIES ROOM

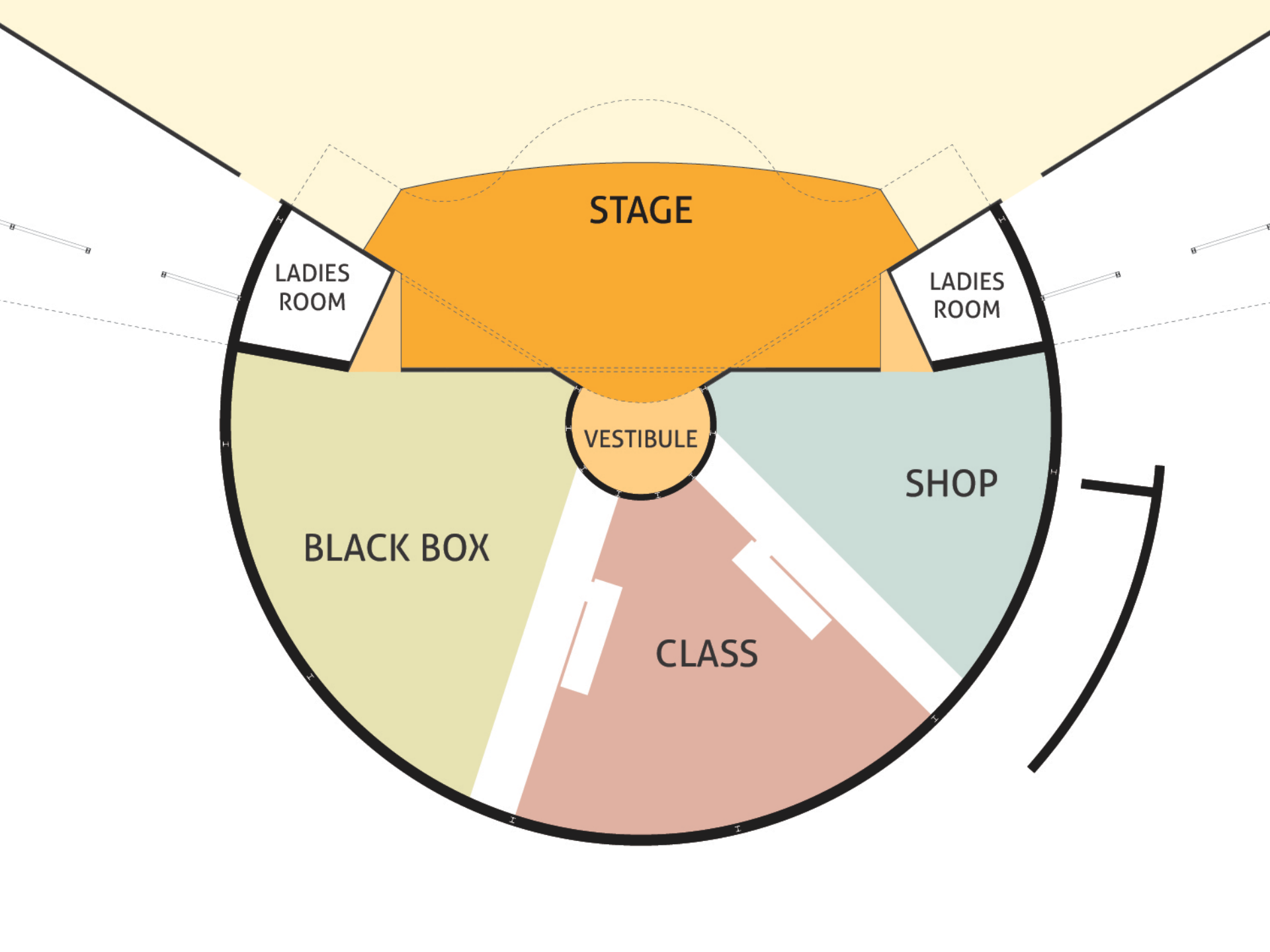
LADIES ROOM

VESTIBULE

BLACK BOX

CLASS

SHOP



STAGE

LADIES ROOM

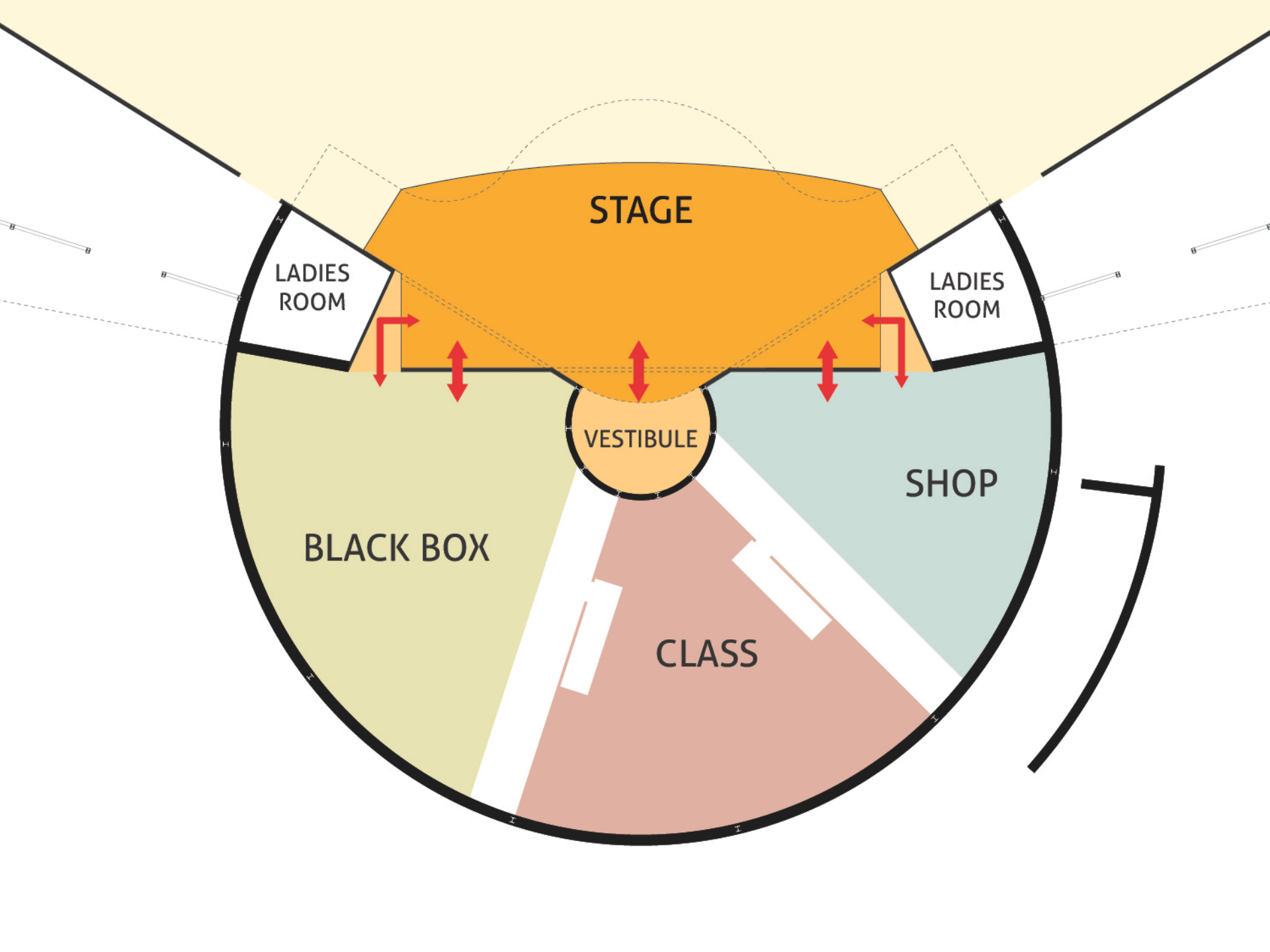
LADIES ROOM

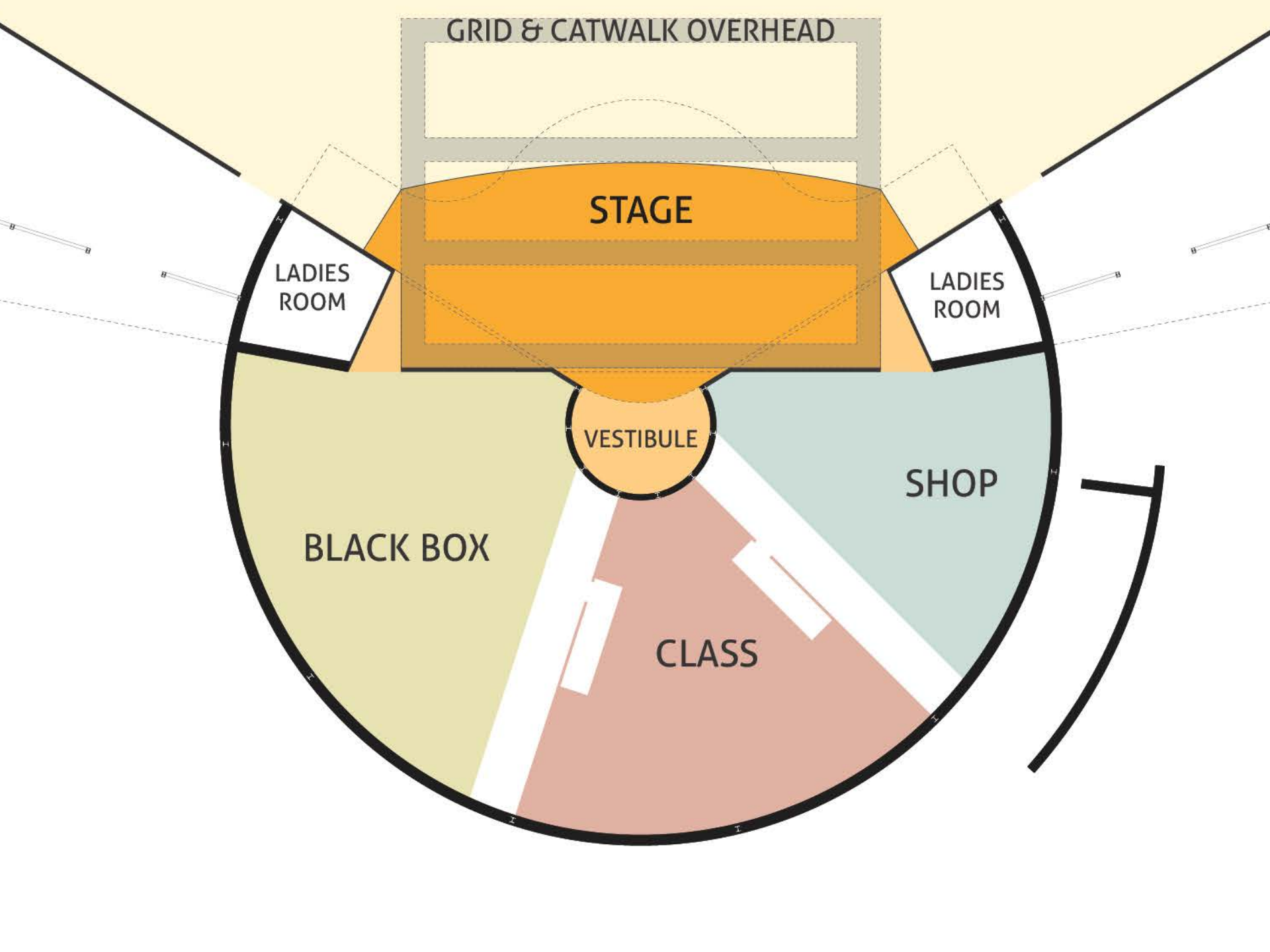
VESTIBULE

BLACK BOX

SHOP

CLASS





GRID & CATWALK OVERHEAD

STAGE

LADIES ROOM

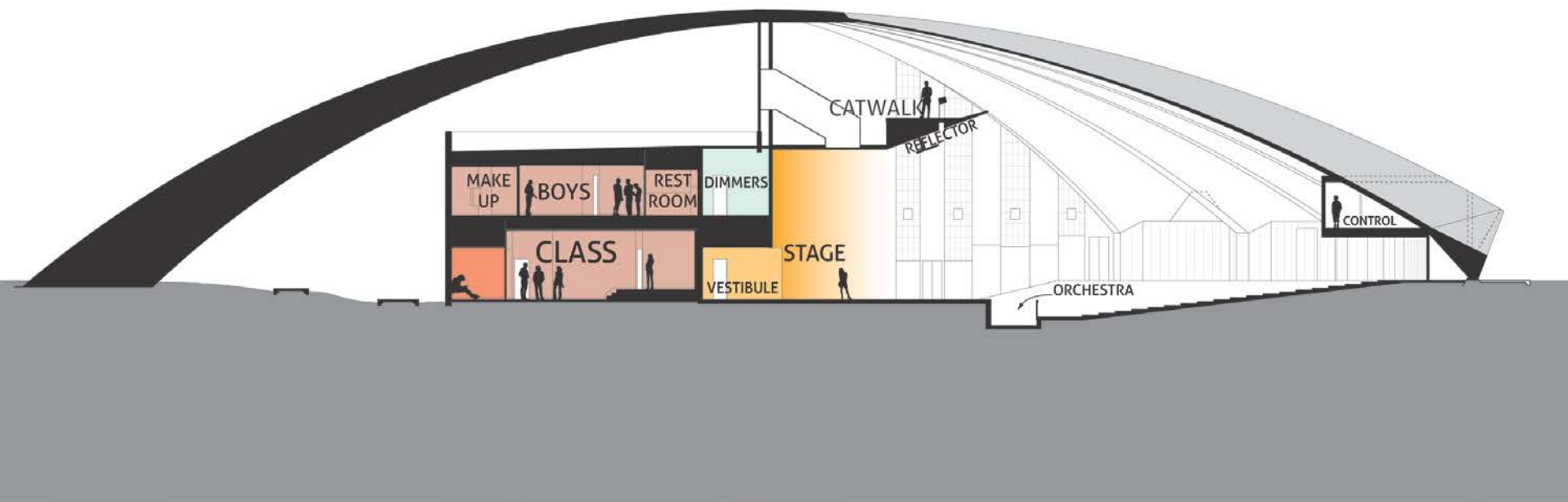
LADIES ROOM

VESTIBULE

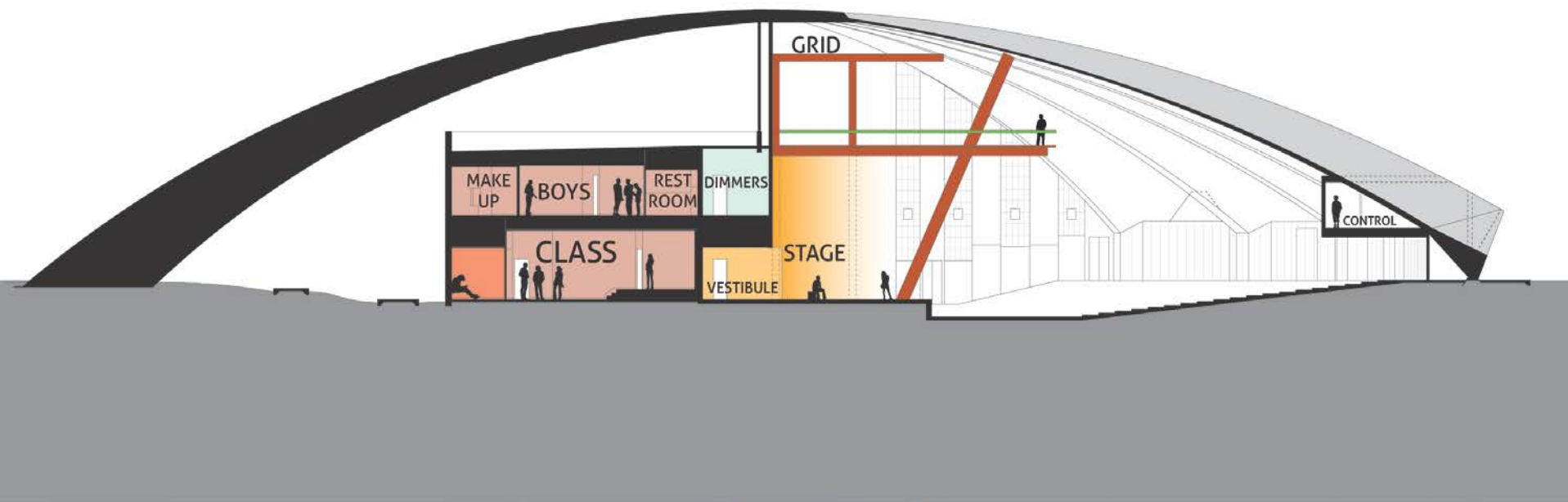
SHOP

BLACK BOX

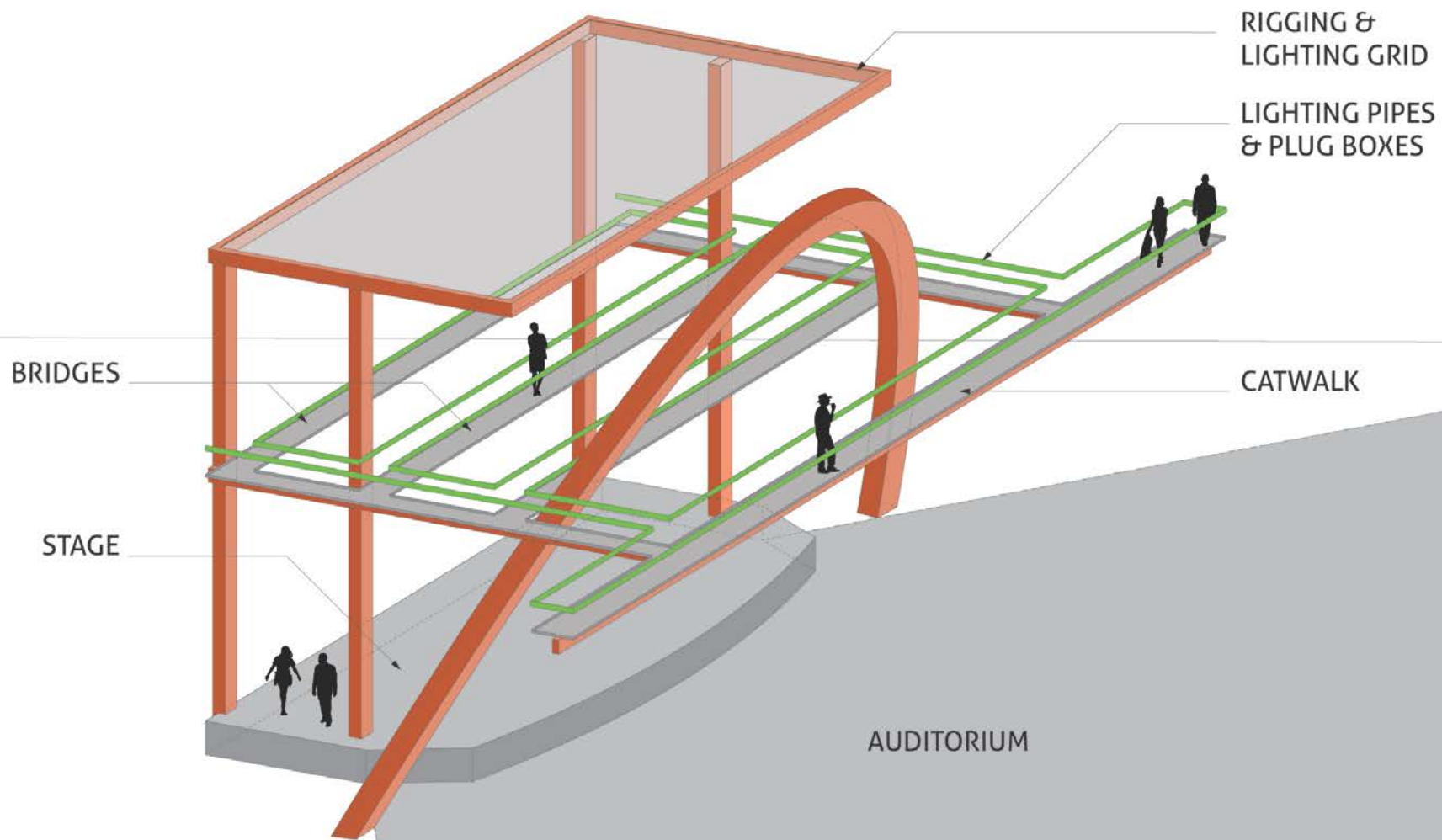
CLASS



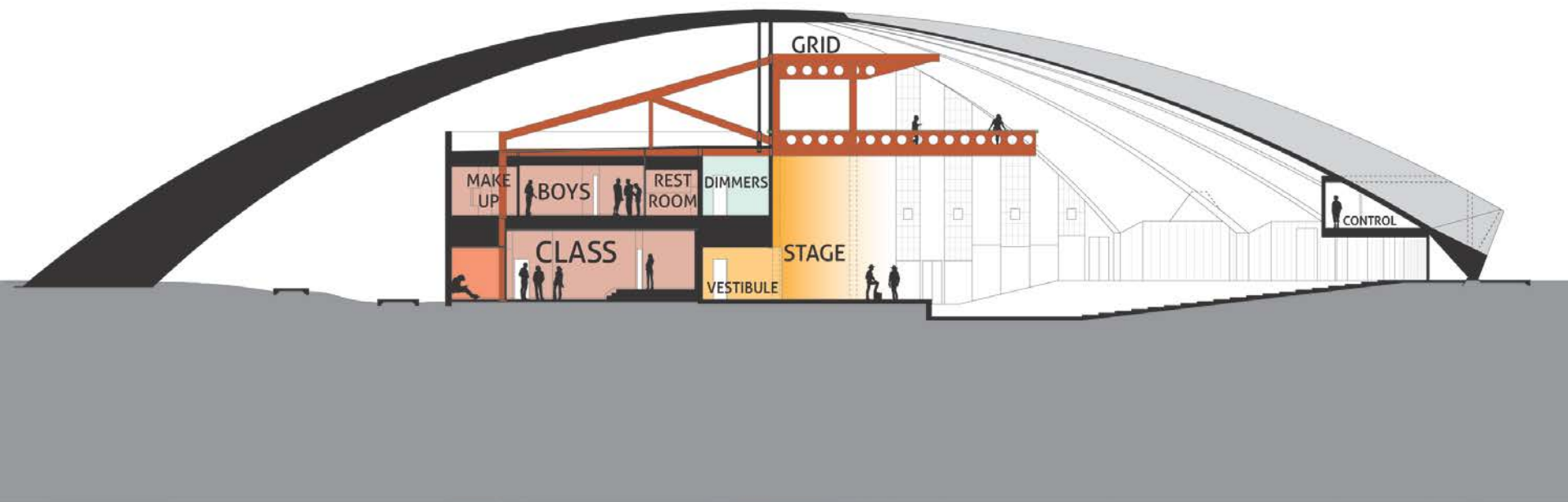
Existing



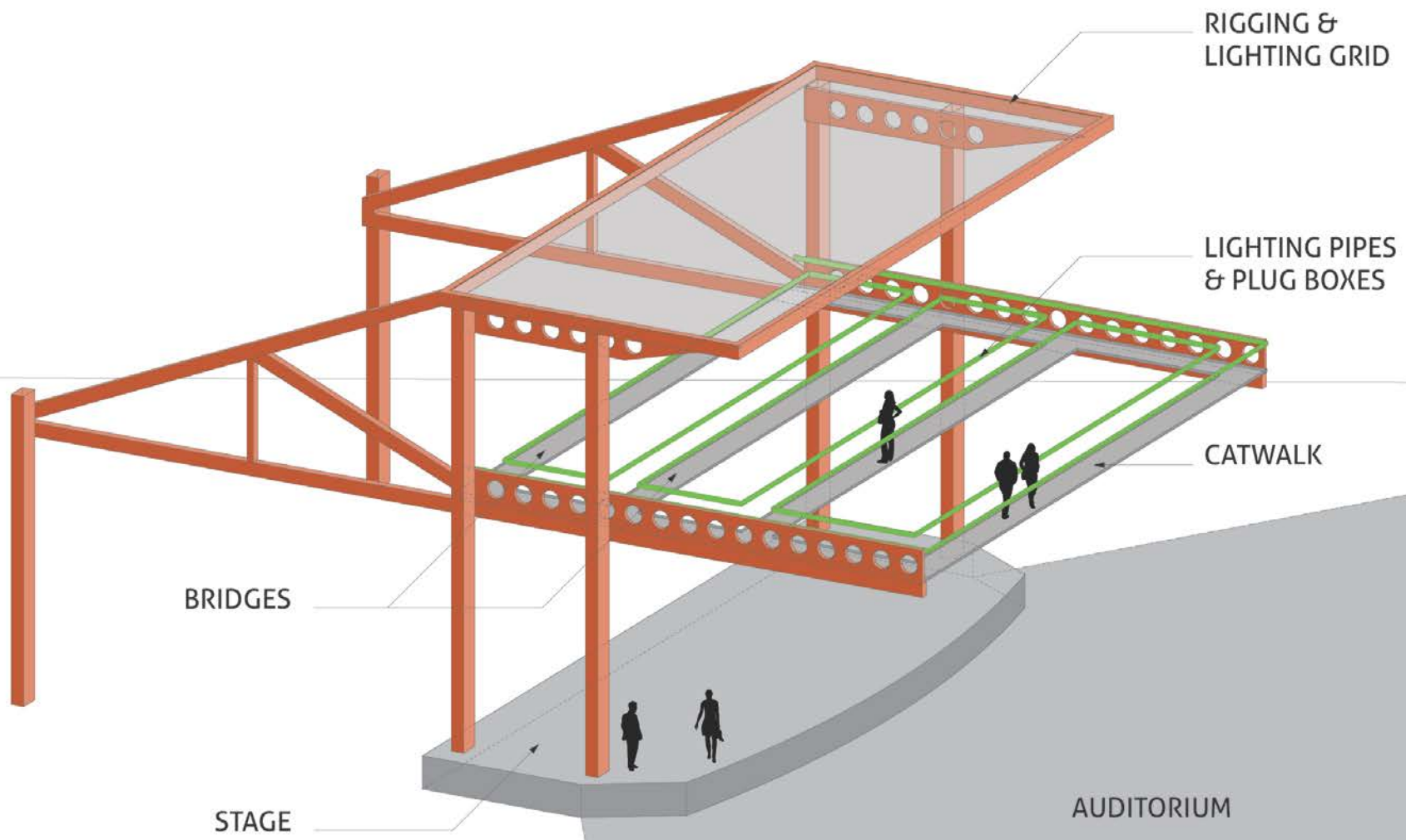
Option 01



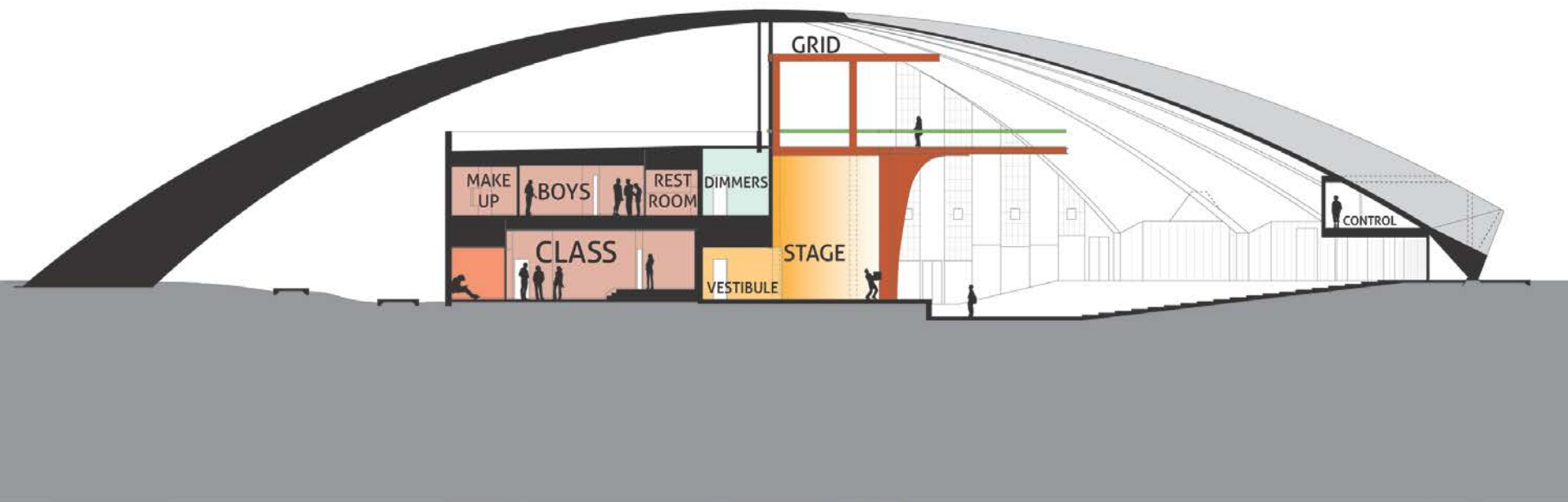
Option 01



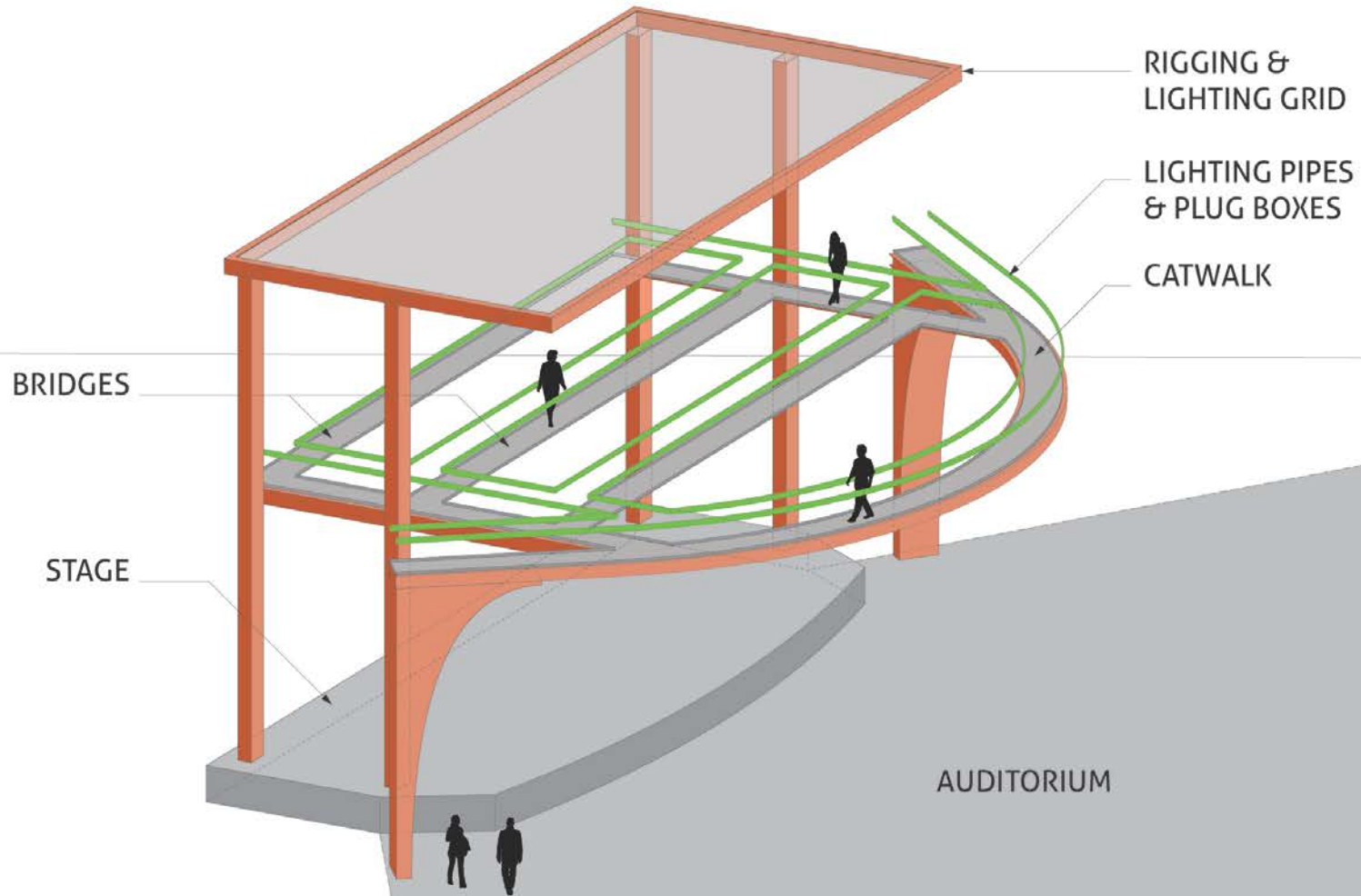
Option 02



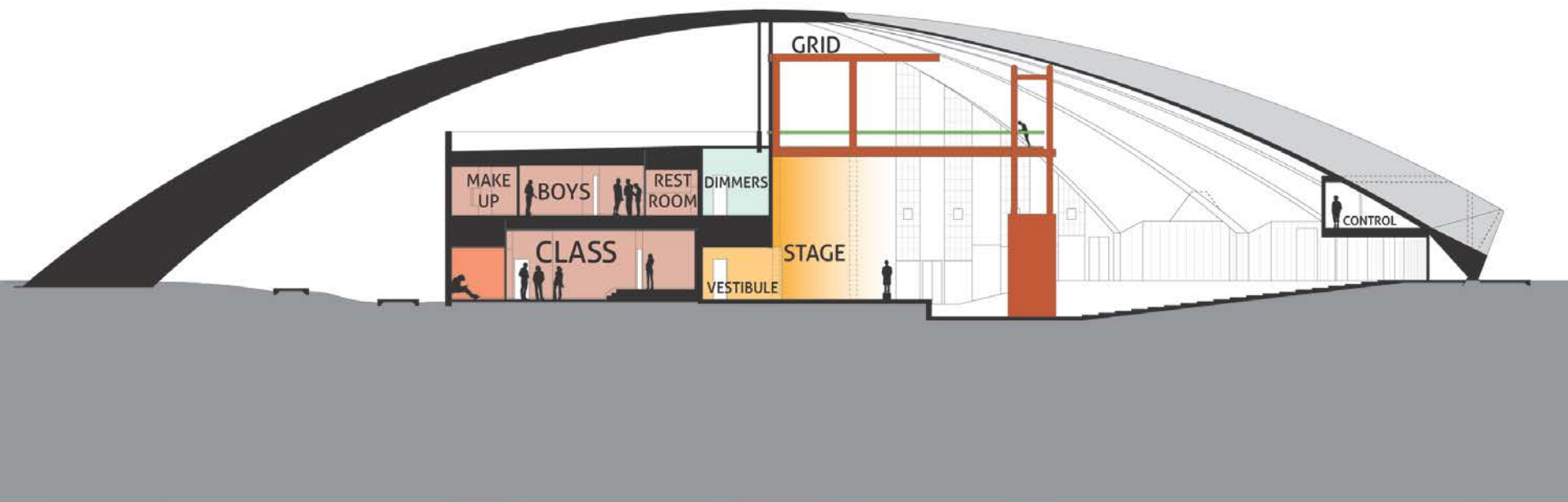
Option 02



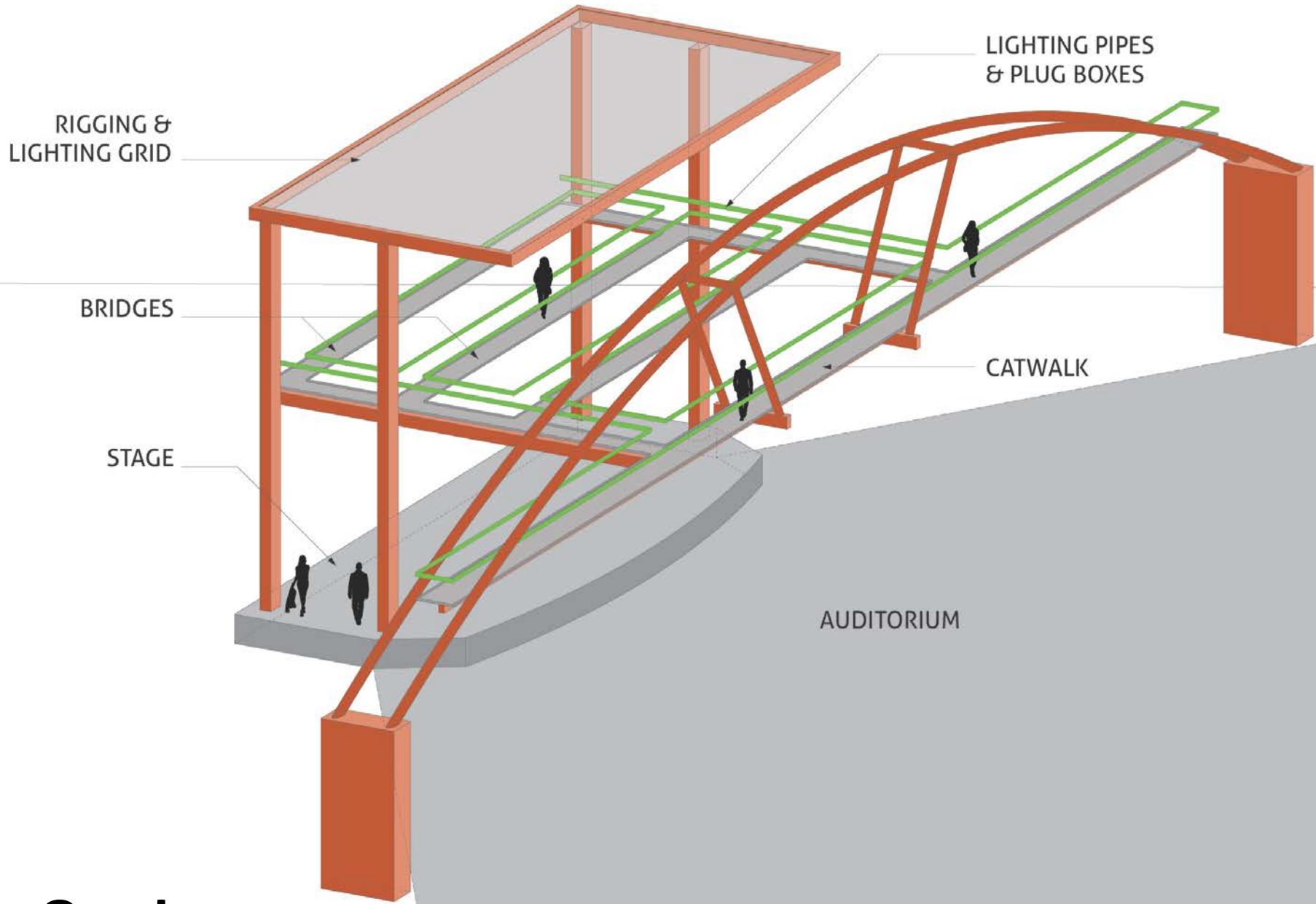
Option 03



Option 03



Option 04

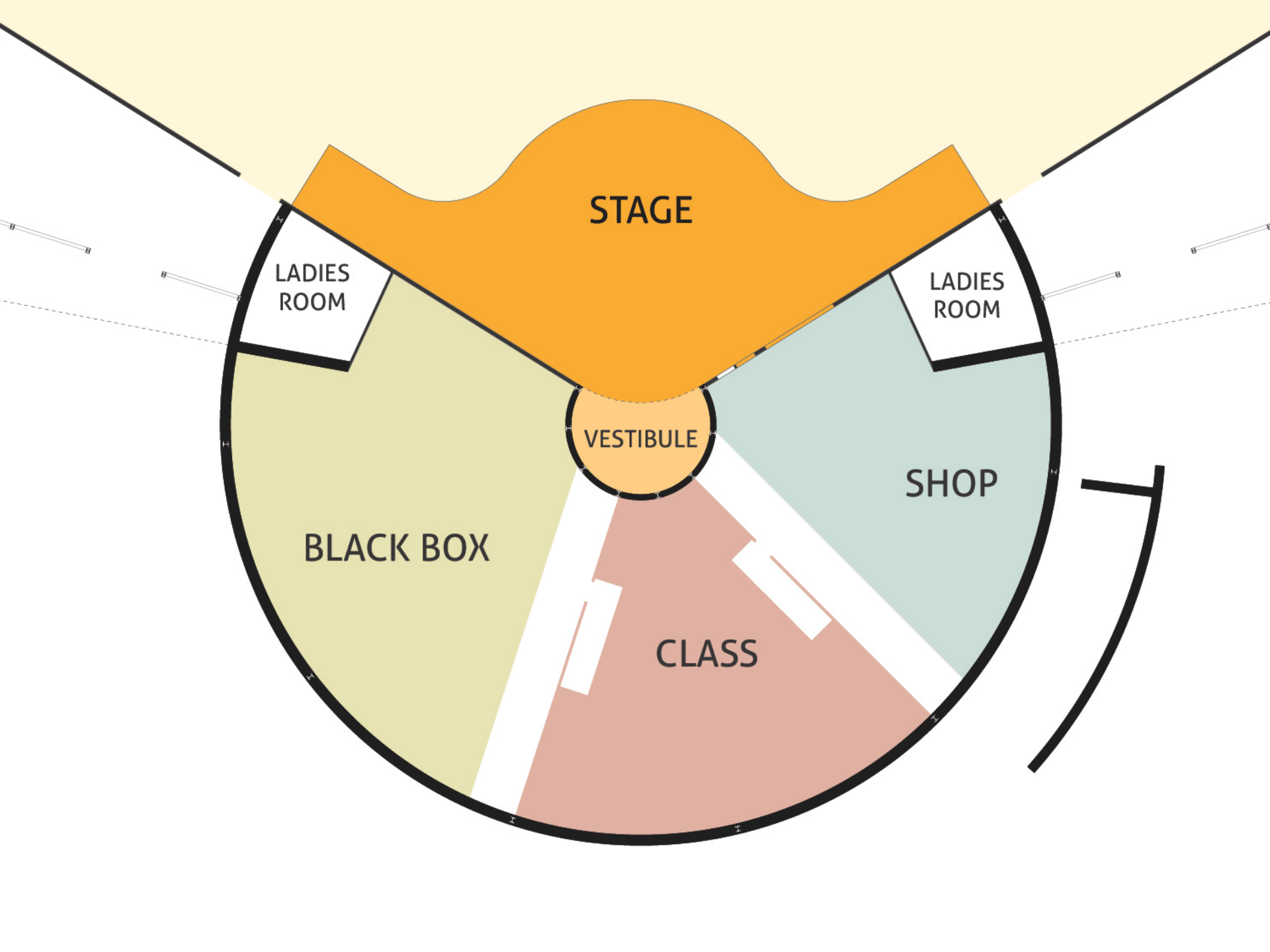


Option 04

PRIORITY THREE

Back of House Areas

- Function
- Education
- Accessibility
- Adjacencies & Flexibility
- Technique & Craft



STAGE

LADIES ROOM

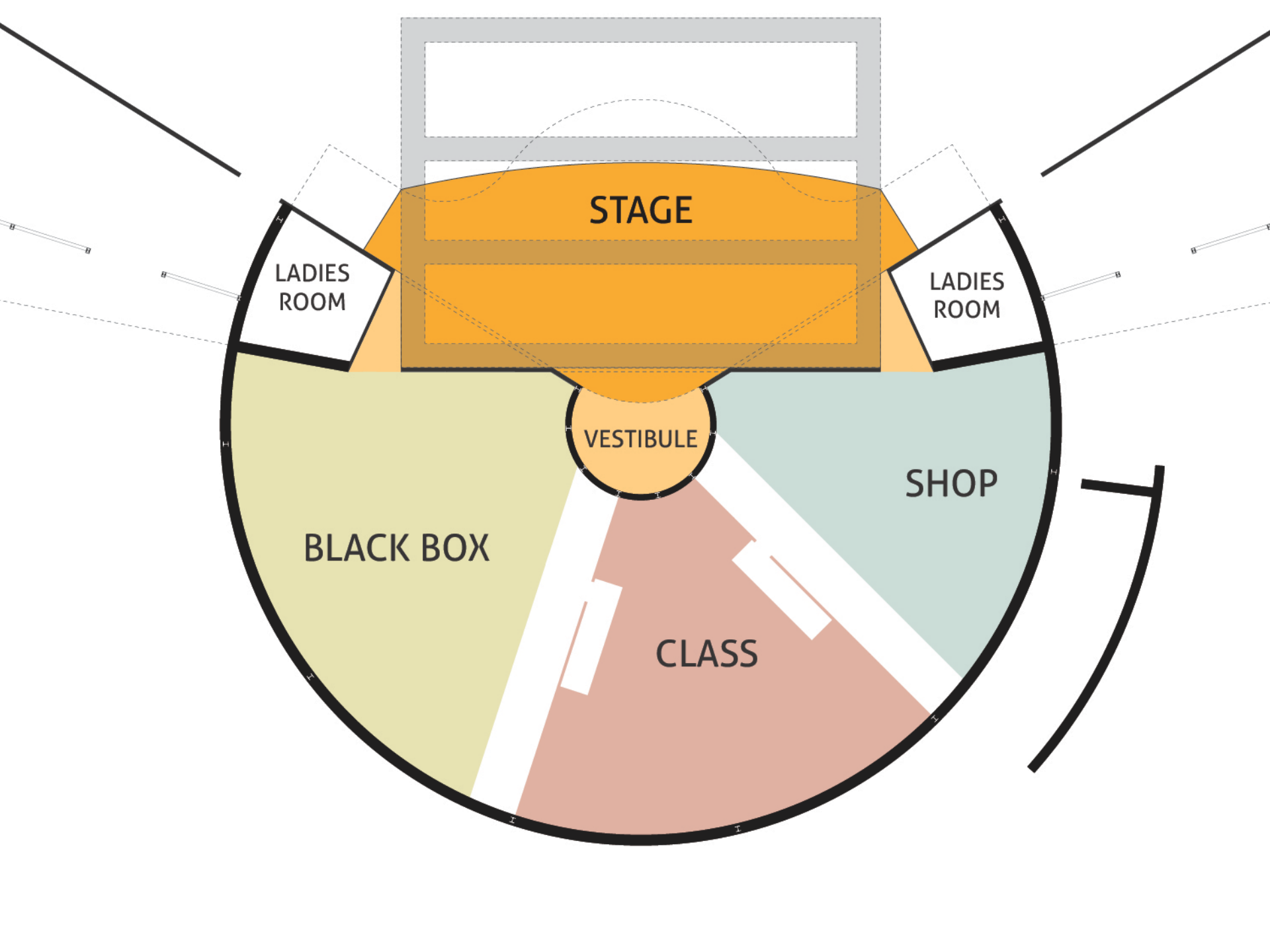
LADIES ROOM

VESTIBULE

BLACK BOX

SHOP

CLASS



STAGE

LADIES ROOM

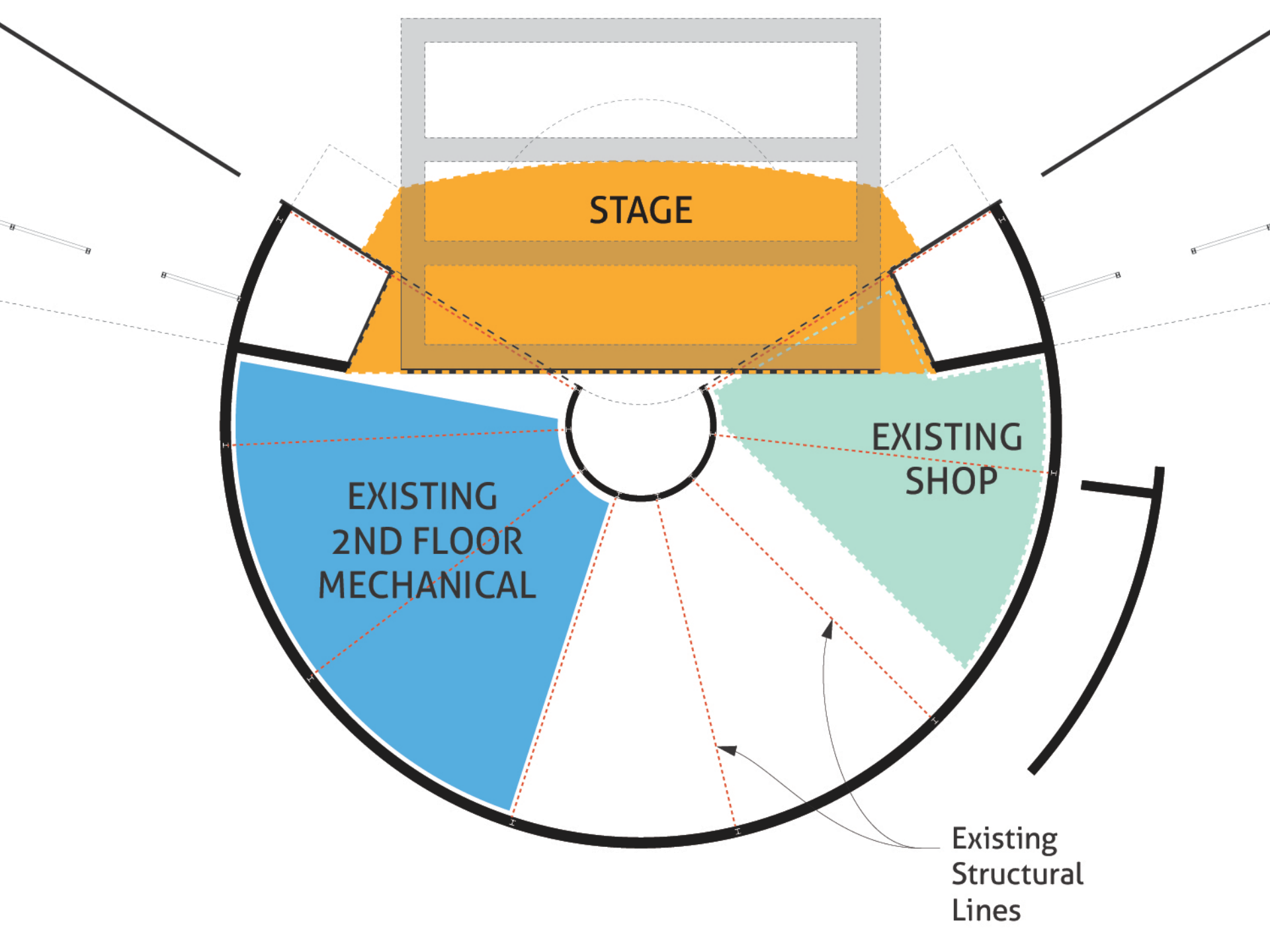
LADIES ROOM

VESTIBULE

BLACK BOX

SHOP

CLASS

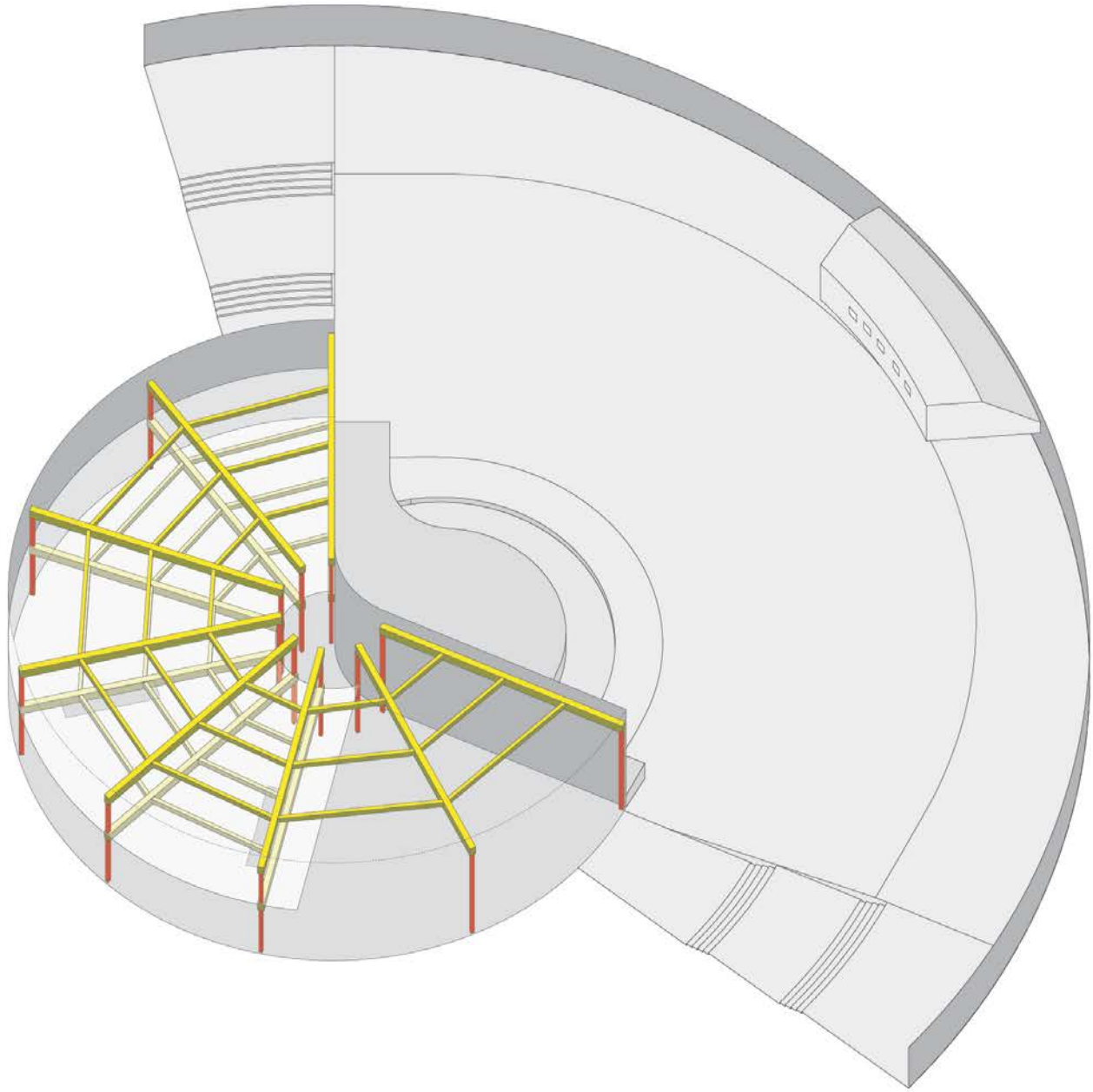


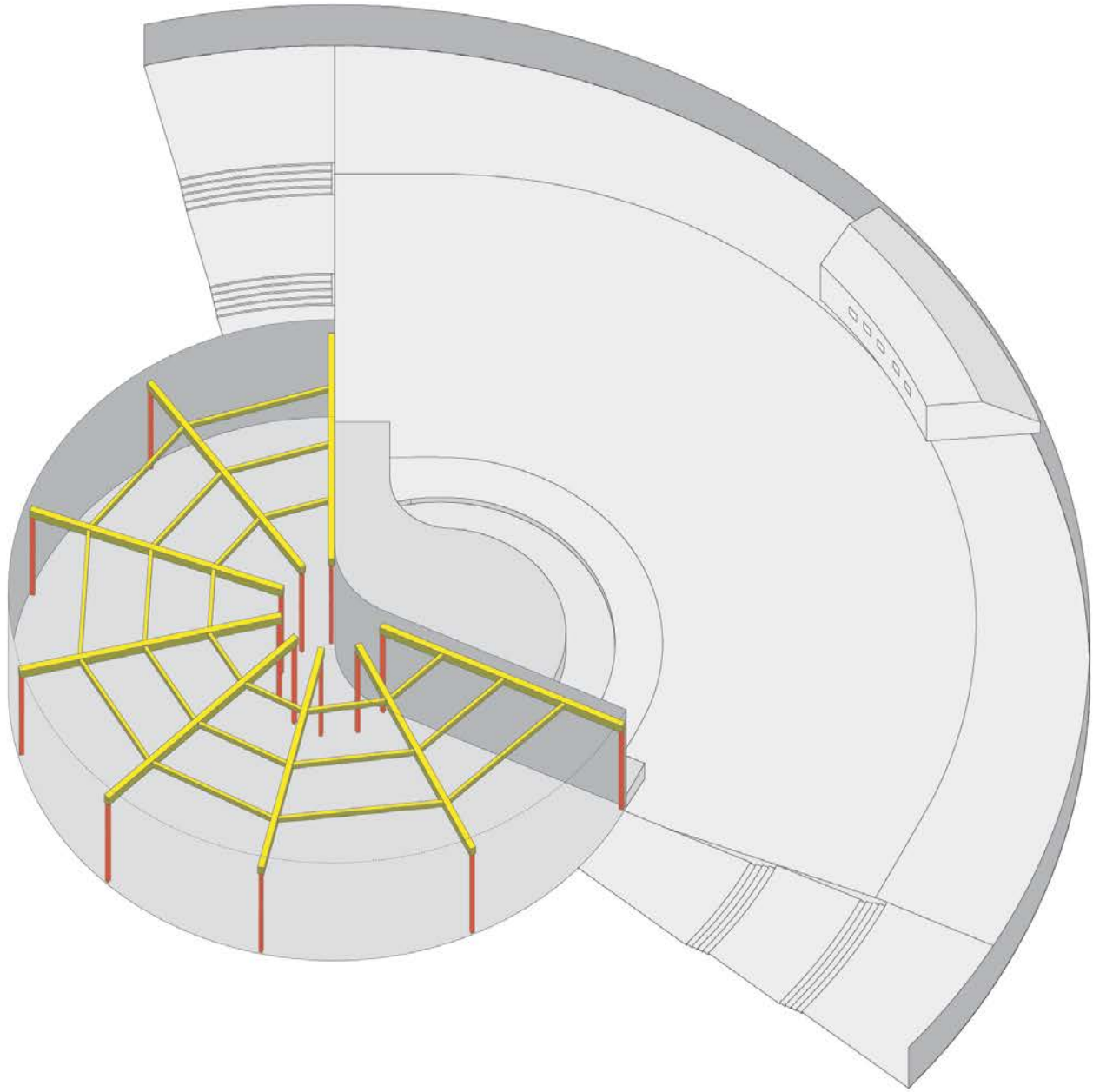
STAGE

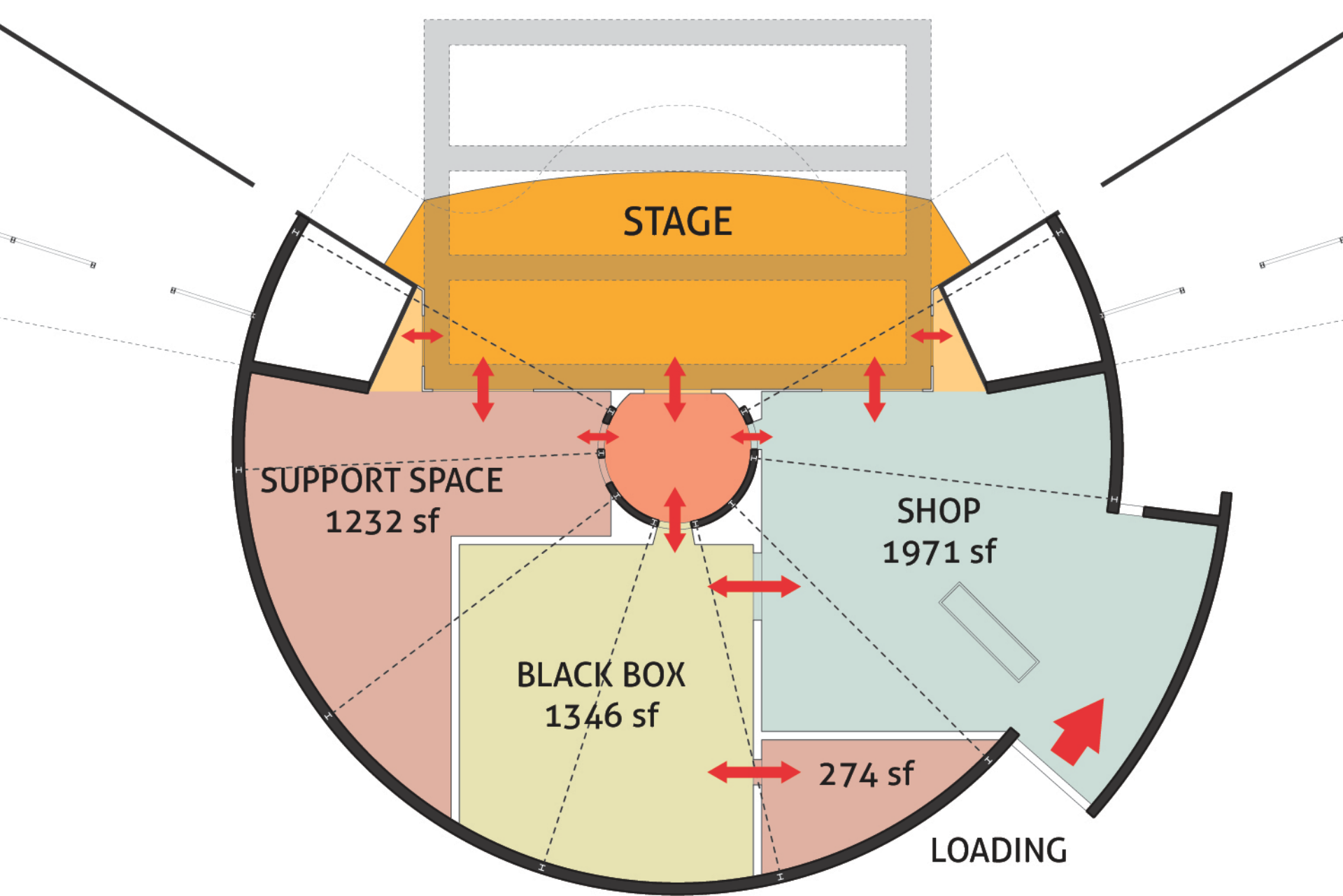
EXISTING
2ND FLOOR
MECHANICAL

EXISTING
SHOP

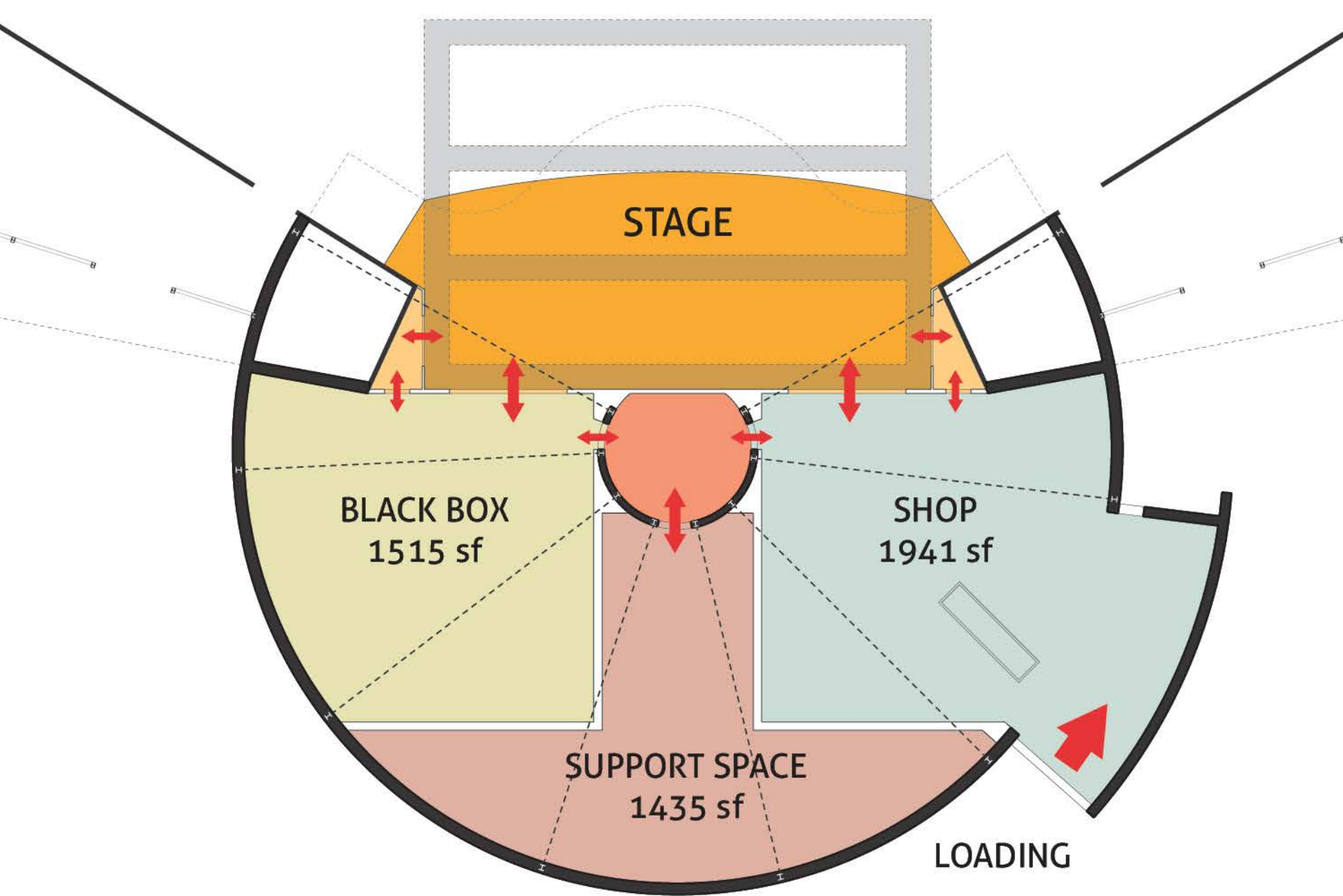
Existing
Structural
Lines



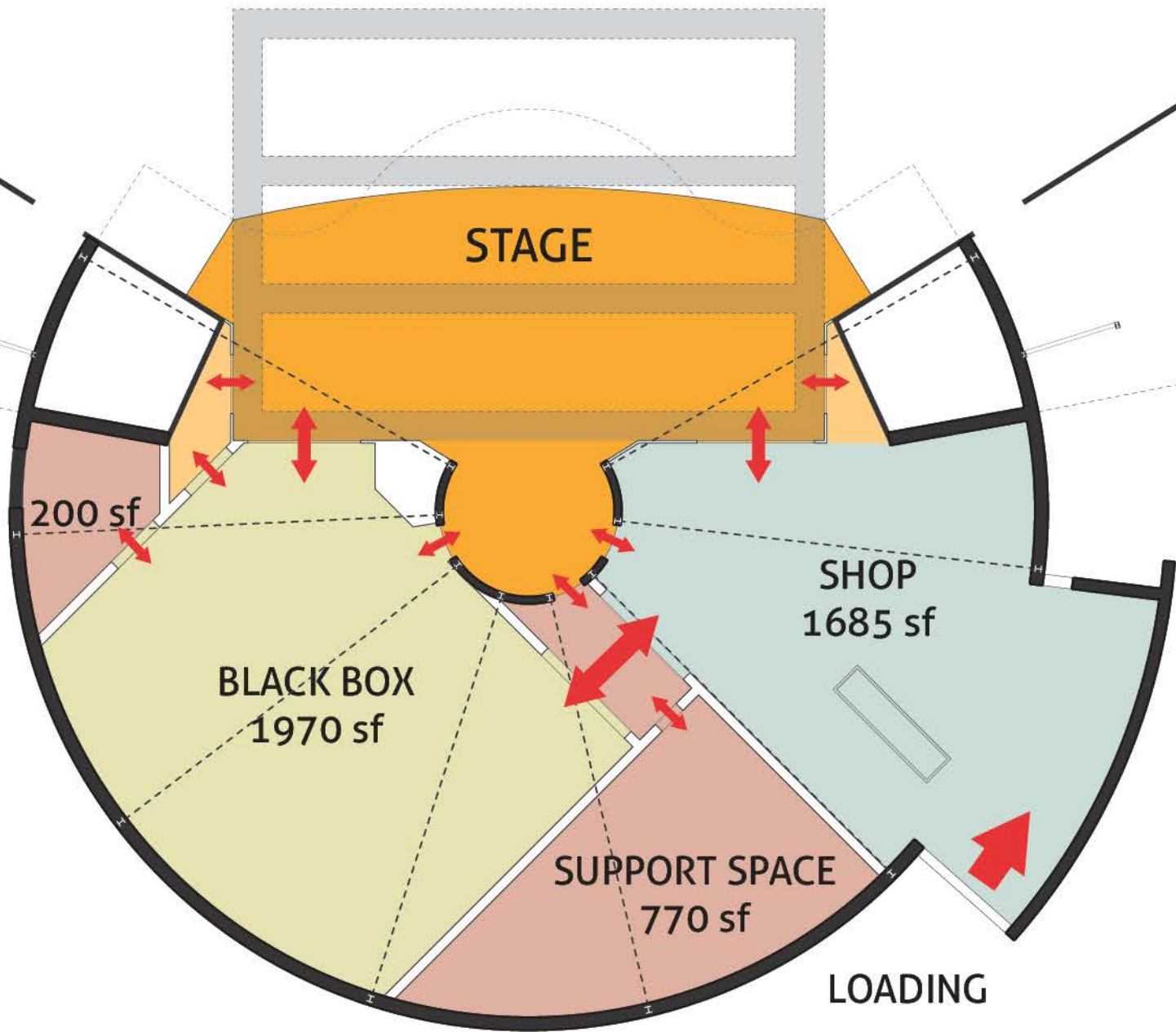




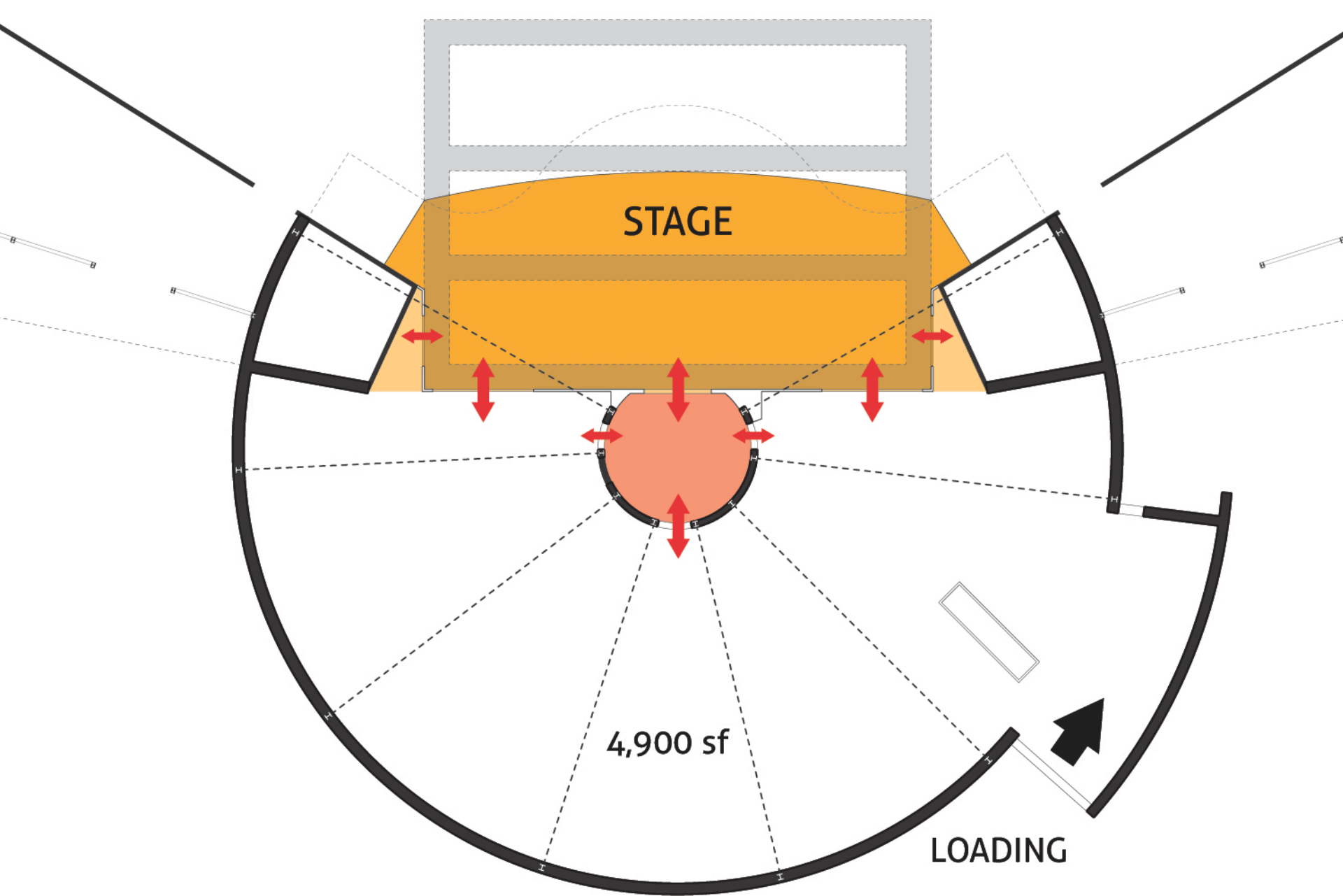
Option 01



Option 02



Option 03



Option 04